

To arrange a viewing contact us
today on 01268 777400



Bridge Road, Wickford Guide price £225,000

BALCONY - Aspire Estate Agents are delighted to present this two-bedroom, two-bathroom apartment to the market, offered with complete onward chain. If you've been eagerly anticipating a property that could serve as an ideal starter home or a valuable addition to your investment portfolio, then this may be the perfect opportunity for you.

Upon entering the property, you'll be greeted by a spacious living area featuring French doors that open onto a balcony, a contemporary fitted kitchen, two double bedrooms, a family bathroom, and an additional shower room & WC. Furthermore, this property offers the added advantages of a lease with 132 years remaining and allocated parking. Guide Price £225,000 - £250,000

Entrance:

Storage:

Shower Room: 5'3 x 5'6

Bathroom: 4'1 x 5'10

Bedroom One: 8'11 x 12'3

Bedroom Two: 7'9 x 12'3

Lounge/ Dinning Room: 11'1 x 16

Kitchen: 9'4 x 5'11

Balcony: 9'1 x 3'5

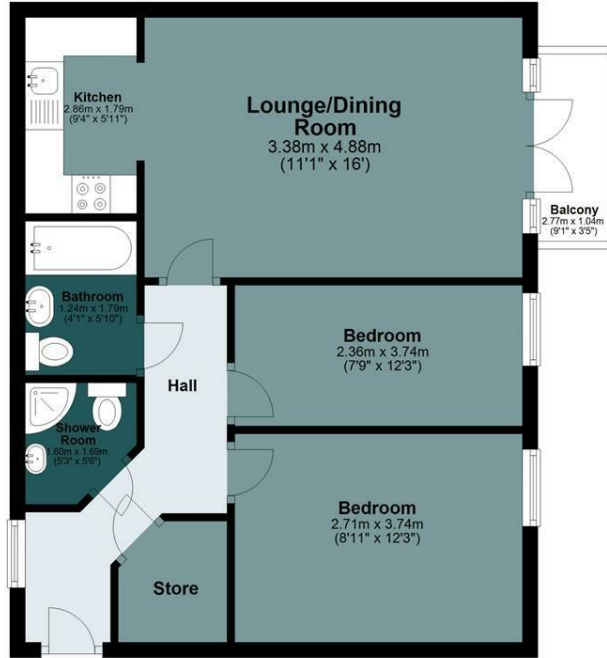
Parking:

Bridge Road

Approx. Gross Internal Area 52.5 Sq M (565 Sq Ft)

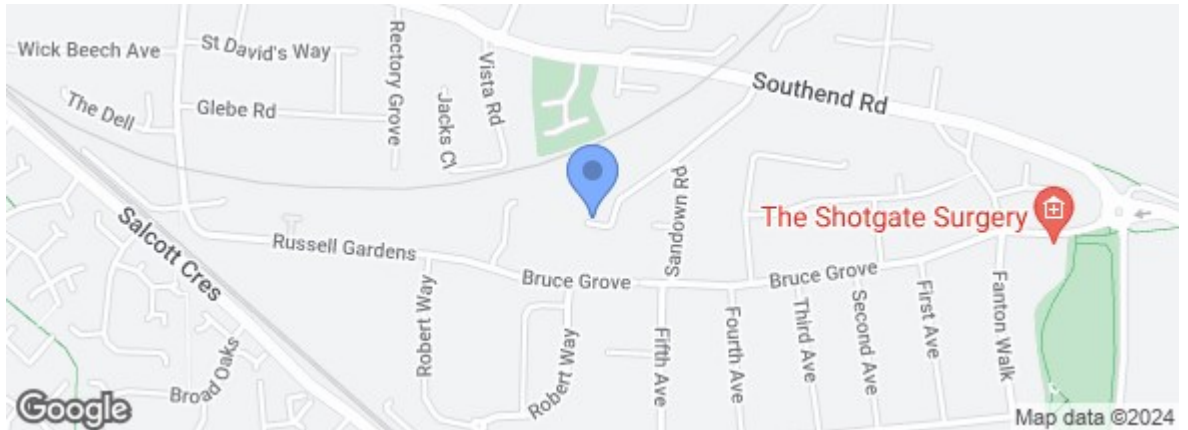
ASPIRE
ESTATE AGENTS

Ground Floor
Approx. 52.5 sq. metres (565.0 sq. feet)



Measurements are approximate and for illustration purposes only. While we do not doubt the accuracy and completeness, we advise you conduct a careful independent assessment of the property to determine monetary value.
© @modephoto/uk www.modephoto.co.uk

Energy Efficiency Rating		Current	Potential
Very energy efficient - lower running costs			
(92 plus)	A		
(81-91)	B		
(69-80)	C		
(55-68)	D		
(39-54)	E		
(21-38)	F		
(1-20)	G		
Not energy efficient - higher running costs			
England & Wales		EU Directive 2002/91/EC	
Environmental Impact (CO ₂) Rating		Current	Potential
Very environmentally friendly - lower CO ₂ emissions			
(92 plus)	A		
(81-91)	B		
(69-80)	C		
(55-68)	D		
(39-54)	E		
(21-38)	F		
(1-20)	G		
Not environmentally friendly - higher CO ₂ emissions			
England & Wales		EU Directive 2002/91/EC	



rightmove.co.uk
The UK's number one property website

Zoopla.co.uk

Under the Property Misdescriptions Act 1991 we make every effort to ensure our sales details are accurate but they are a general outline and do not constitute any part of an offer or contract. Any services, equipment and fittings have not been tested and no warranty can be given as to their condition. We strongly recommend that all the information provided be verified by your advisors and in particular, measurements required for a specific purpose such as fitted furniture or carpets. Please tell us if you have any problems and members of our branches will help either over the phone or in person. A copy of our complaints procedure is available on request. The details are issued on the strict understanding that any negotiations in respect of the property named herein are conducted through Aspire Estate Agents.