



233 St. Helens Road

, Hastings, TN34 2NE

Asking Price £375,000



3



2



2



D



# 233 St. Helens Road



## Description

### Stylish 1930s Semi-Detached Home with Mature Gardens

Beautifully presented and generously proportioned, this charming 1930s semi-detached house offers both comfort and character. The property boasts a well-kept mature garden, a street-level garage, and a versatile garden room complete with its own bar — perfect for entertaining. There's also a handy side shed/workshop with electrics for extra storage.

Situated at the upper edge of Alexandra Park and adjacent to Roar Gill's picturesque woodland, the home enjoys a peaceful setting with nature on the doorstep. Its location provides excellent access to both Hastings and St Leonards, as well as nearby supermarkets, schools, and everyday amenities.

- 3 Bedroom, Semi-Detached House
- Sunny Large Rear Garden With Side Access
- Garage
- Open Plan Living/Dining Room
- Beautifully Presented 1930's Home
- Summer House With Electricity
- Spacious Bedrooms
- Leafy Location

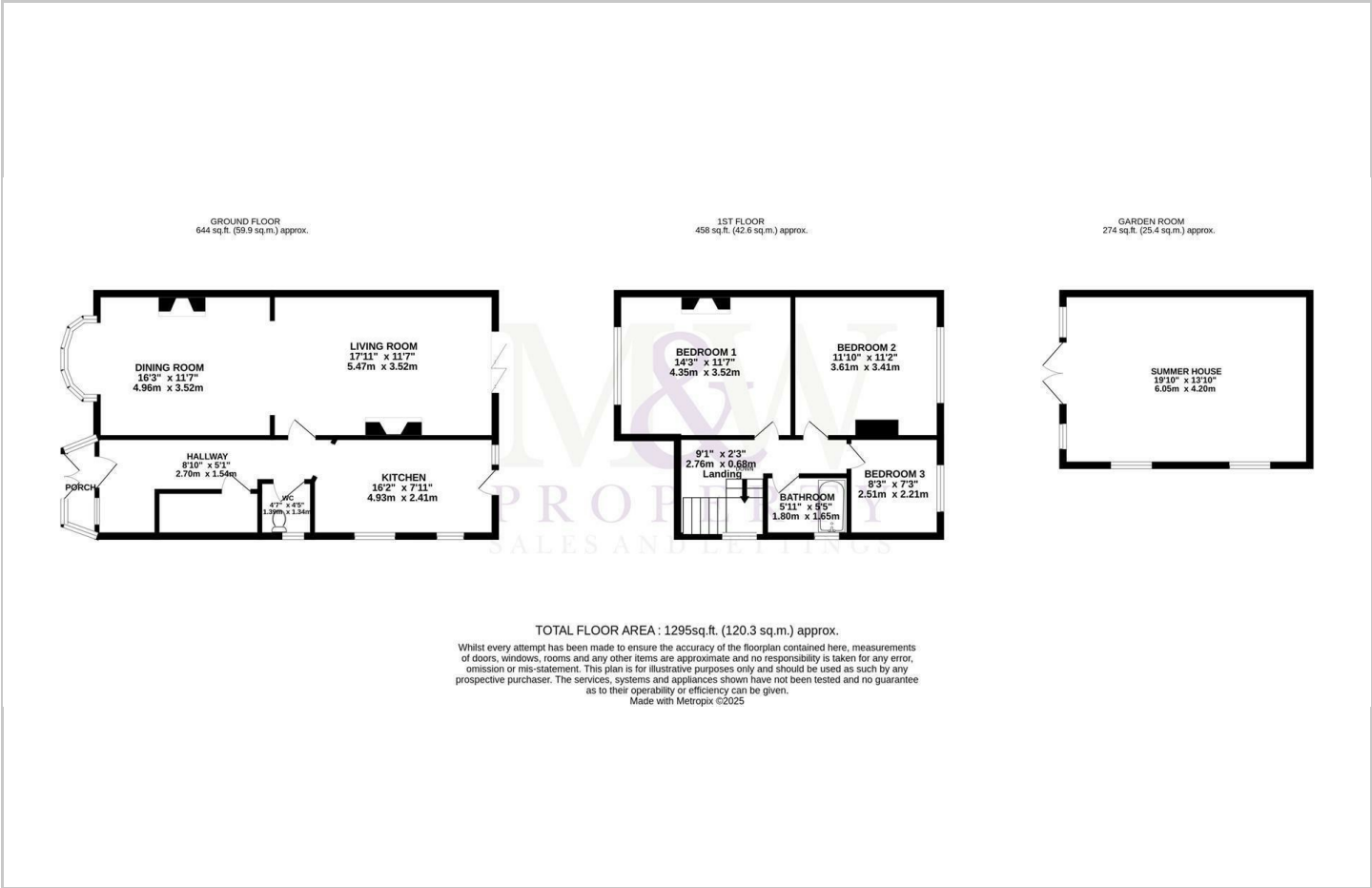




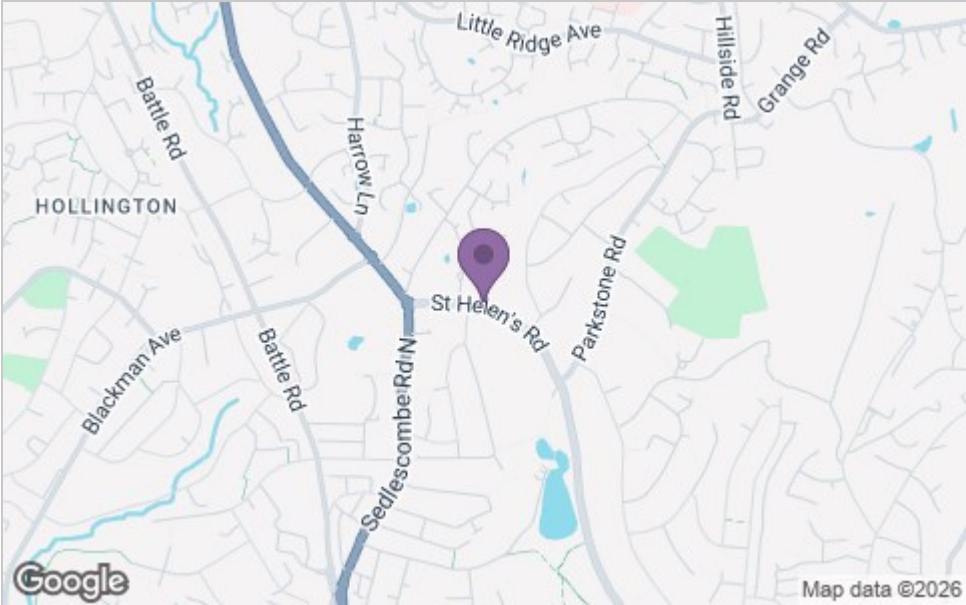




Floor Plan



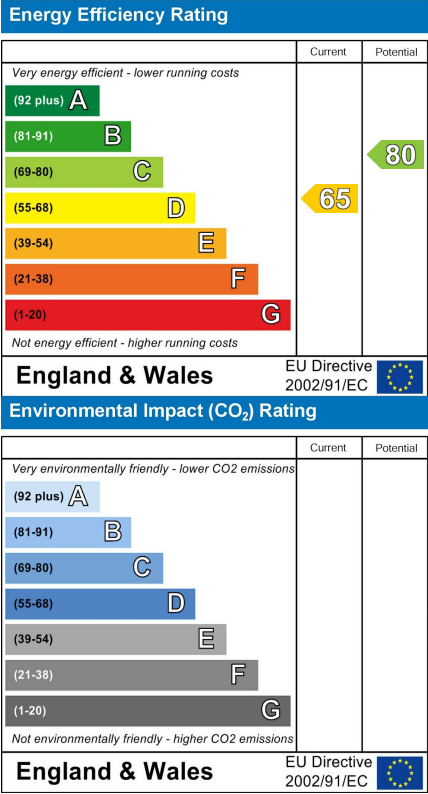
Area Map



Viewing

Please contact our St Leonards on Sea Office on 01424 420073 if you wish to arrange a viewing appointment for this property or require further information.

Energy Efficiency Graph



These particulars, whilst believed to be accurate are set out as a general outline only for guidance and do not constitute any part of an offer or contract. Intending purchasers should not rely on them as statements of representation of fact, but must satisfy themselves by inspection or otherwise as to their accuracy. No person in this firms employment has the authority to make or give any representation or warranty in respect of the property.