

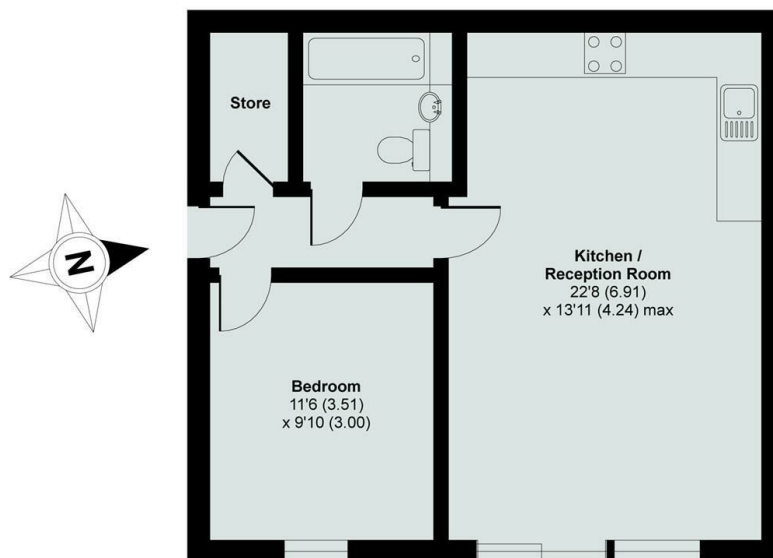


42a Wootton Road, Abingdon, Oxon, OX14 1JD

£1,295 PCM - 19th December 2025.

- Ground Floor Apartment
- Gas Central Heating
- EPC Rating B
- 560 SQ FT
- Open Plan Living and Dining to the Kitchen
- Doors to Outside Terrace
- Council Tax Band C
- Fully Fitted Kitchen
- Parking for One Car
- Communal Garden

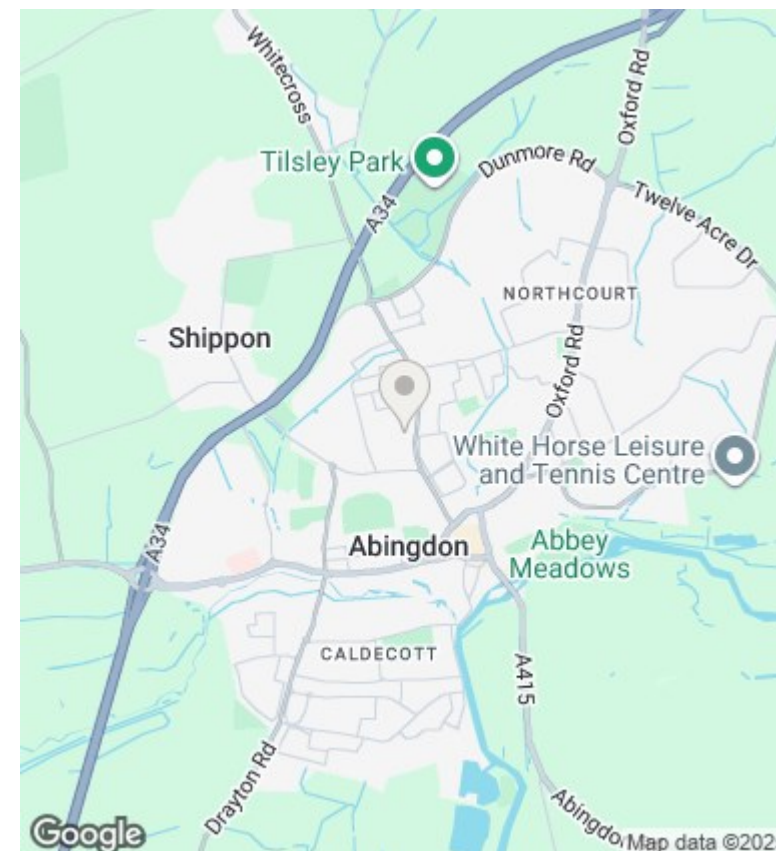
APPROX. GROSS INTERNAL FLOOR AREA 560 SQ FT 52 SQ METRES



GROUND FLOOR

Whilst every attempt has been made to ensure the accuracy of the floor plan contained here, measurements of doors, windows and rooms are approximate and no responsibility is taken for any error, omission or misstatement. These plans are for representation purposes only as defined by RICS Code of Measuring Practice and should be used as such by any prospective purchaser. Specifically no guarantee is given on the total square footage of the property if quoted on this plan. Any figure given is for initial guidance only and should not be relied on as a basis of valuation.

Copyright nichecom.co.uk 2015 Produced for Thomas Merrifield REF : 32970



Directions

Viewings

Viewings by arrangement only. Call 01235 554950 to make an appointment.

Council Tax Band

C

EPC Rating:

C

Energy Efficiency Rating		
	Current	Potential
Very energy efficient - lower running costs		
(92 plus) A		
(81-91) B		
(69-80) C	80	80
(55-68) D		
(39-54) E		
(21-38) F		
(1-20) G		
Not energy efficient - higher running costs		
England & Wales	EU Directive 2002/91/EC	