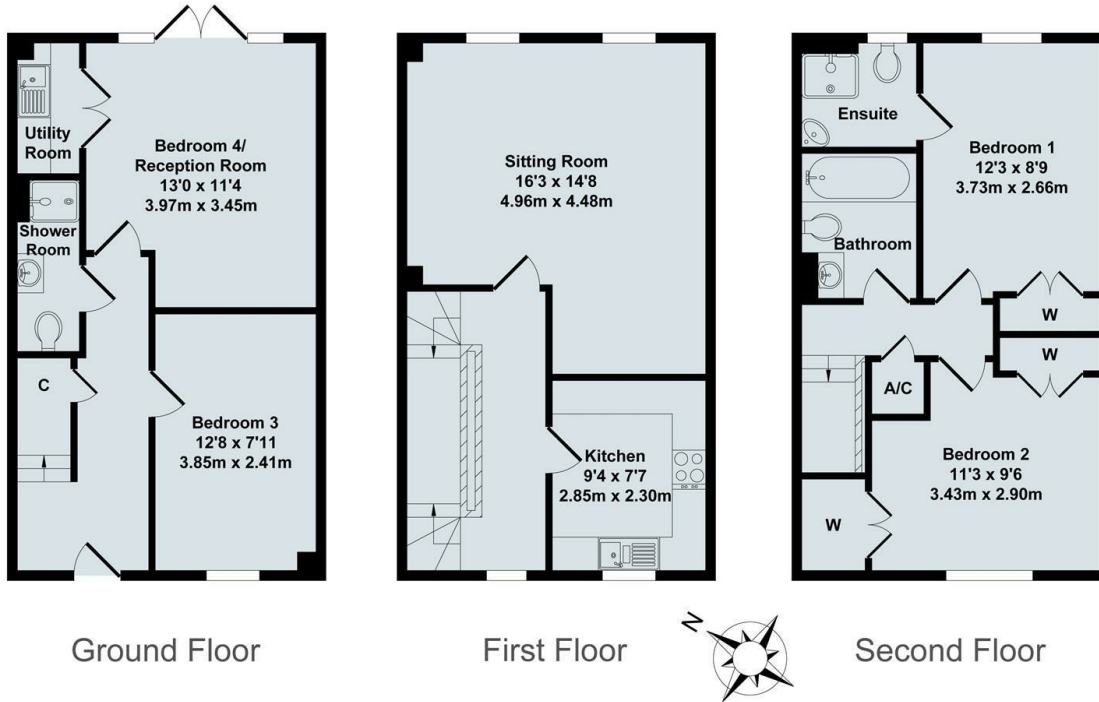




25 Vintner Road, Abingdon, OX14 3PF

£1,600 PCM - 17th August 2024.

- 3/4 bedrooms with en-suite to master bedroom
- Flexible living accommodation
- Gas central Heating
- Sq Ft 1145
- Family bathroom and additional shower room
- Off-street parking and private garden
- Unfurnished
- Large reception and modern kitchen
- A short walk to the town centre
- Council Tax: Vale of White Horse, Band E EPC Band C



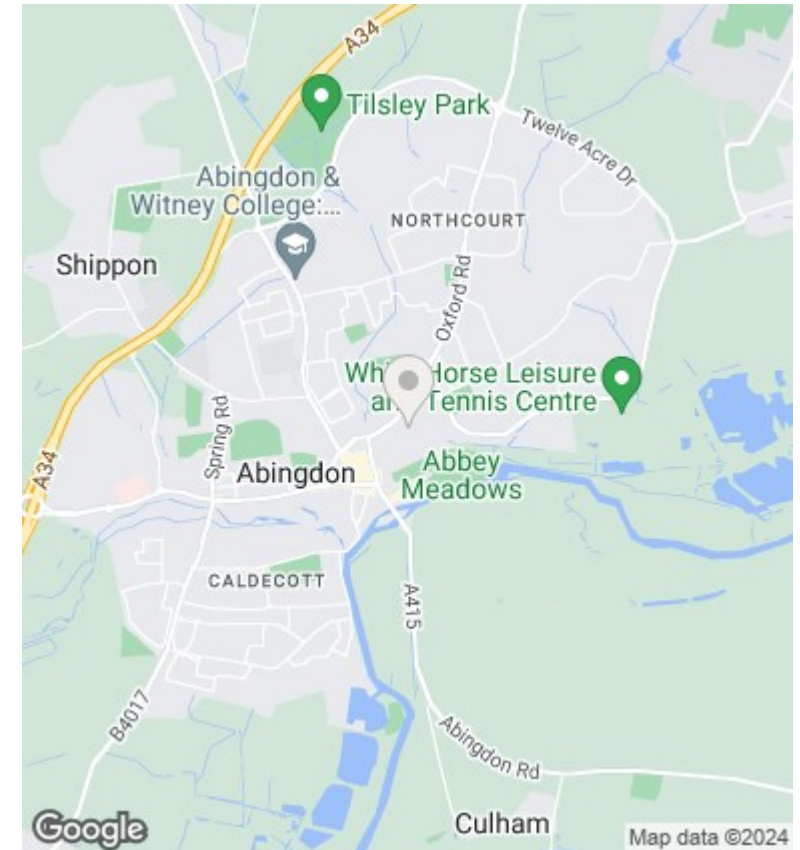
Ground Floor

First Floor

Second Floor

Total Approx. Floor Area 1145 Sq.Ft. (106.40 Sq.M.)

All items illustrated on this plan are included in the "Total Approx Floor Area"



Directions

Viewings

Viewings by arrangement only. Call 01235 554950 to make an appointment.

Council Tax Band

E

EPC Rating:

C

Energy Efficiency Rating		Current	Potential
Very energy efficient - lower running costs			
(92 plus) A			90
(81-91) B		78	
(69-80) C			
(55-68) D			
(39-54) E			
(21-38) F			
(1-20) G			
Not energy efficient - higher running costs			
England & Wales		EU Directive 2002/91/EC	