



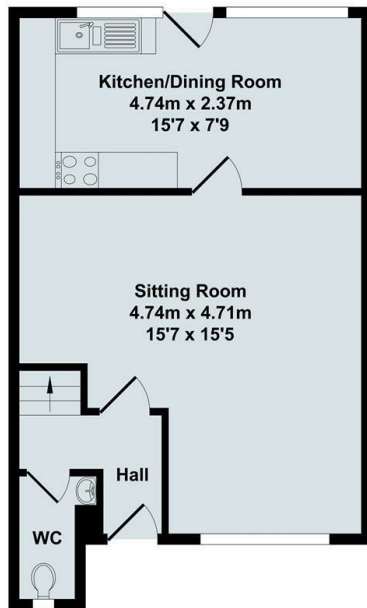
54 Ypres Way, Abingdon, Oxon, OX14 1NG

£1,500 PCM - 22nd August 2024.

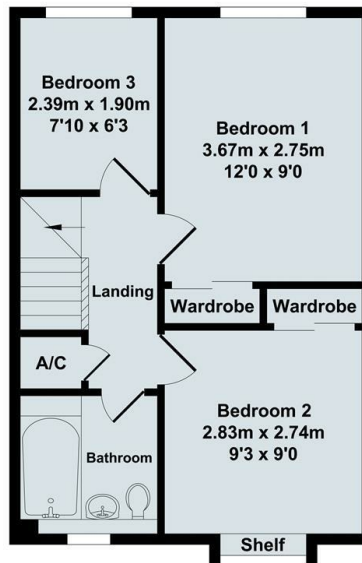
- 3 Bedroom House
- Gas central heating,
- Garden
- EPC Band D

- North Abingdon
- Double Glazing
- Council tax band D

- Allocated off road parking
- Garage
- 747 Sq Ft

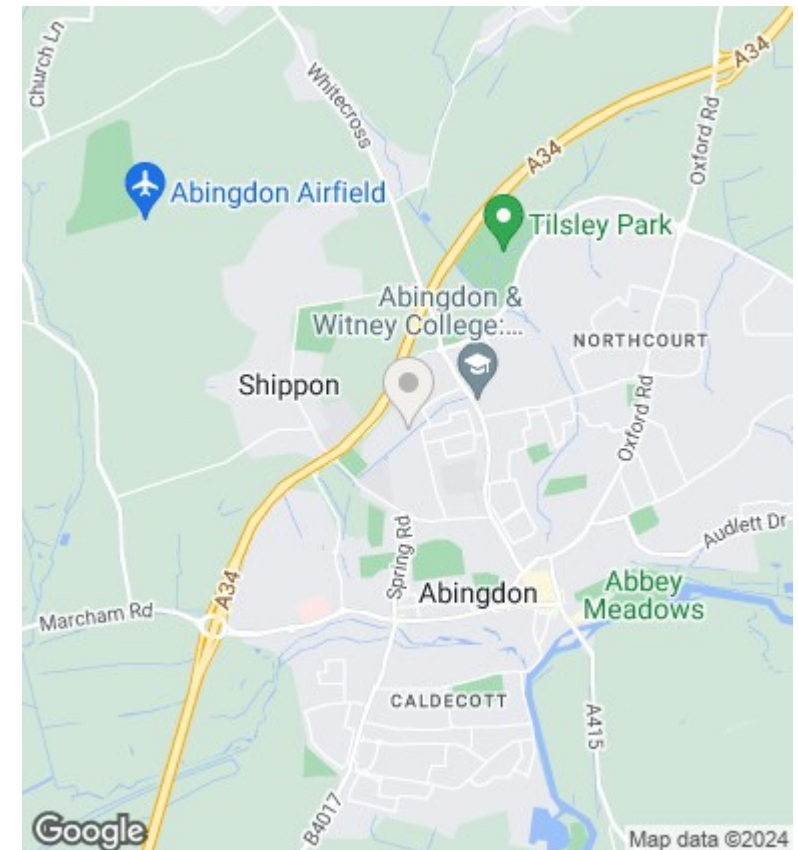


Ground Floor
Approx. Floor
Area 34.87 Sq.M.
(375 Sq.Ft.)



First Floor
Approx. Floor
Area 34.53 Sq.M.
(372 Sq.Ft.)

Total Approx. Floor Area 69.4 Sq.M. (747 Sq.Ft.)



Directions

Viewings

Viewings by arrangement only. Call 01235 554950 to make an appointment.

Council Tax Band

D

EPC Rating:

Energy Efficiency Rating		
	Current	Potential
<i>Very energy efficient - lower running costs</i>		
(92 plus) A		
(81-91) B		
(69-80) C		
(55-68) D		
(39-54) E		
(21-38) F		
(1-20) G		
<i>Not energy efficient - higher running costs</i>		
England & Wales	EU Directive 2002/91/EC	