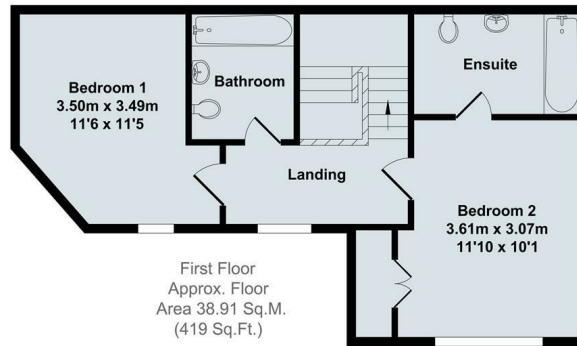
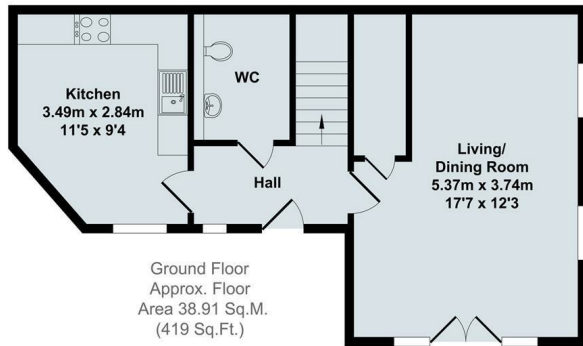




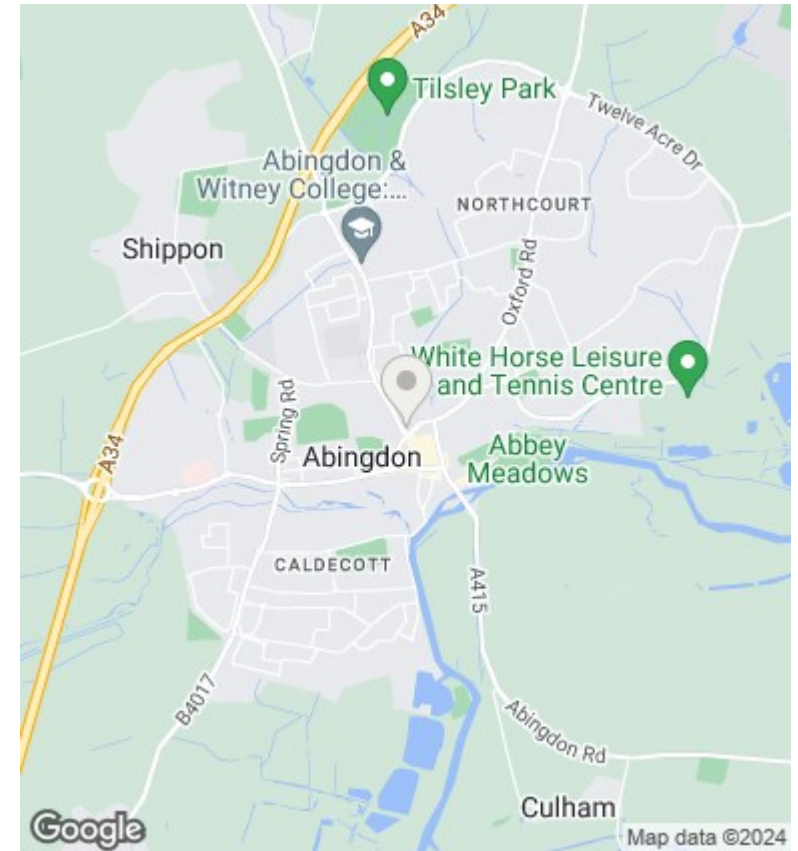
5 Gosling Court, Abingdon, Oxon, OX14 1TT

£1,300 PCM - 20th August 2024.

- Unfurnished two bedroom mews house within walking distance to the town centre.
- Epc Rating B
- Secondary double glazing
- Two Bathrooms
- Council Tax Band C
- Sq Ft 838
- Allocated parking, for 1 car
- Gas Central Heating



Total Approx. Floor Area 77.82 Sq.M. (838 Sq.Ft.)



Directions

Viewings

Viewings by arrangement only. Call 01235 554950 to make an appointment.

Council Tax Band

C

EPC Rating:

C

Energy Efficiency Rating		Current	Potential
<i>Very energy efficient - lower running costs</i>			
(92 plus) A			88
(81-91) B		76	
(69-80) C			
(55-68) D			
(39-54) E			
(21-38) F			
(1-20) G			
<i>Not energy efficient - higher running costs</i>			
England & Wales		EU Directive 2002/91/EC	