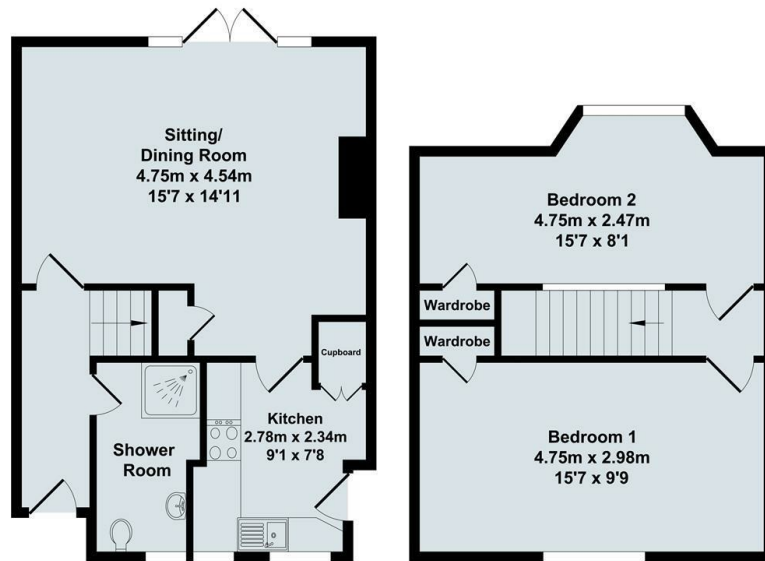




32 Milton Lane, Steventon, Oxon, OX13 6SA

£1,100 PCM - 20th June 2024.

- Character Cottage
- Easy Access Milton Park & Didcot
- Parking on street (non reserved)
- Two Double Bedrooms
- Gas Central Heating
- Overlooking Village Green
- Cat Considered (no dogs)

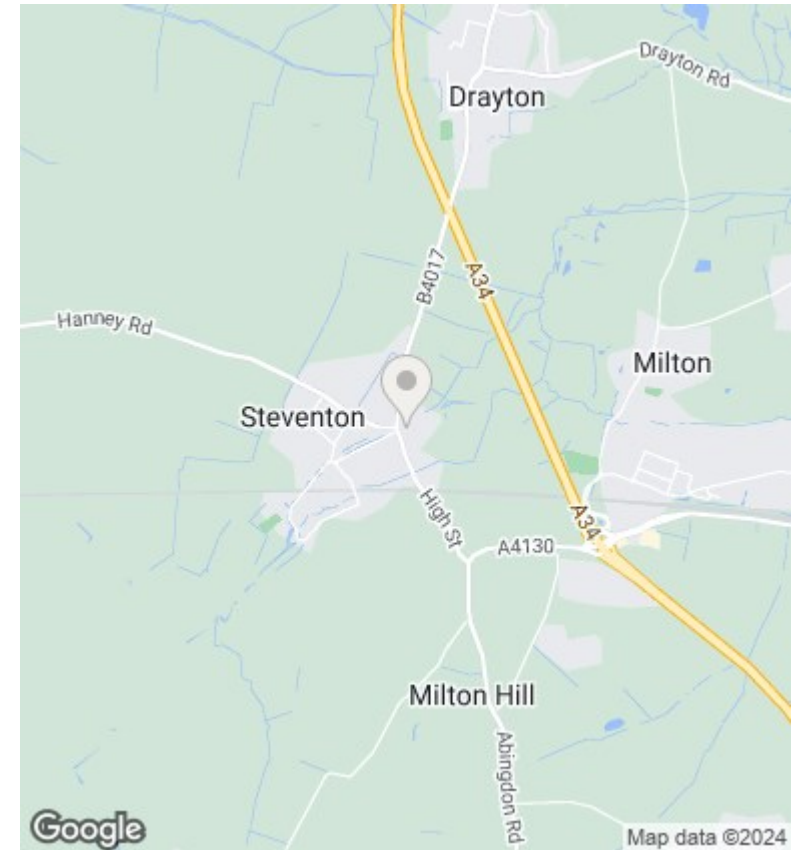


Ground Floor
Approx. Floor
Area 36.37 Sq.M.
(391 Sq.Ft.)



First Floor
Approx. Floor
Area 30.53 Sq.M.
(329 Sq.Ft.)

Total Approx. Floor Area 66.90 Sq.M. (721 Sq.Ft.)



Directions

Viewings

Viewings by arrangement only. Call 01235 554950 to make an appointment.

Council Tax Band

E

EPC Rating:

C

Energy Efficiency Rating		Current	Potential
<i>Very energy efficient - lower running costs</i>			
(92 plus) A			
(81-91) B			
(69-80) C		70	73
(55-68) D			
(39-54) E			
(21-38) F			
(1-20) G			
<i>Not energy efficient - higher running costs</i>			
England & Wales		EU Directive 2002/91/EC	