

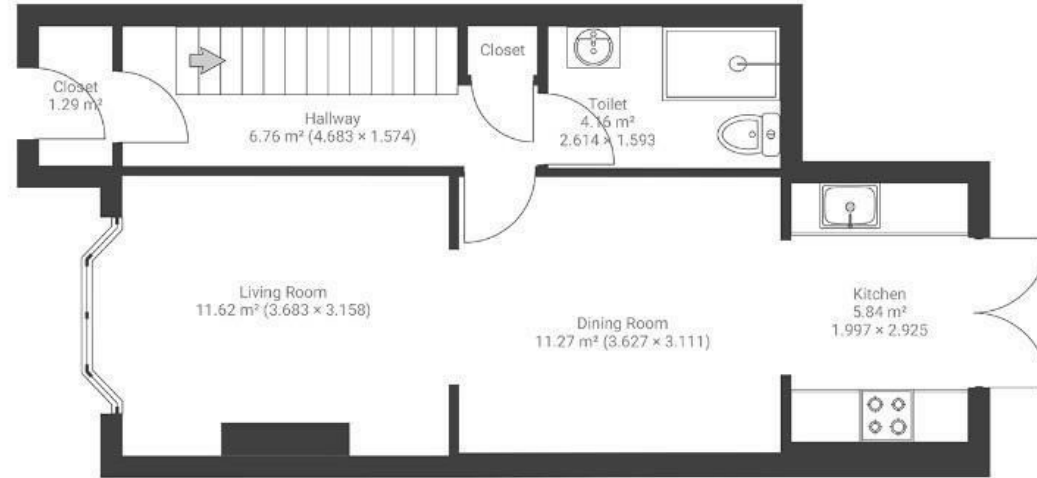
Sandholme Road

BRISLINGTON

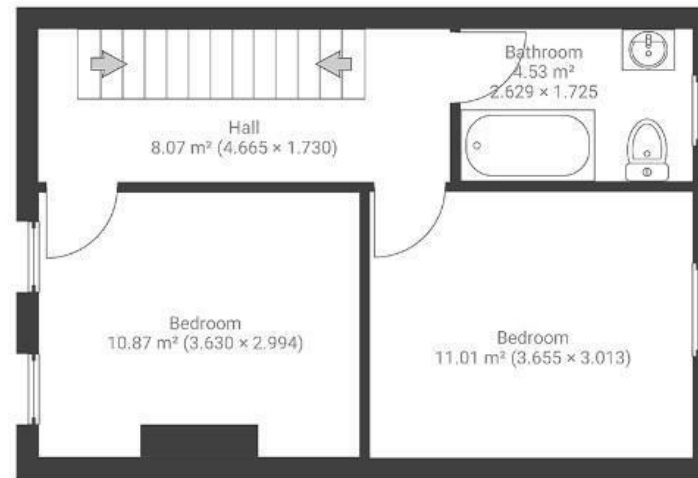
APPROXIMATE FLOOR AREA
98 SQM / 1054 SQFT



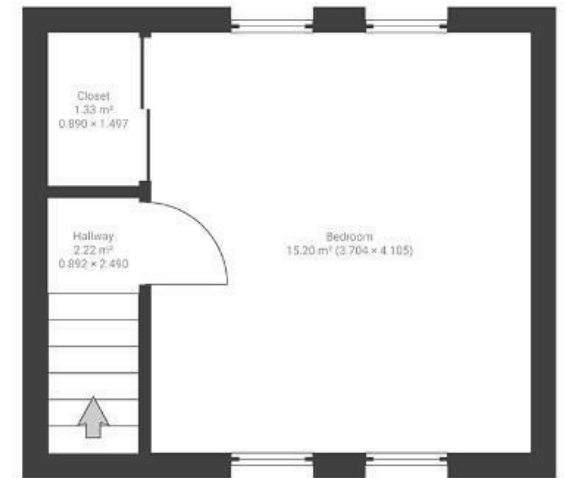
GROUND FLOOR



FIRST FLOOR



LOFT



Boardwalk

Sandholme Road , BRISTOL



£450,000



3 Bedrooms



BS4 3RX



2 Bathrooms

"We really love our home and the area. We couldn't believe our luck when we converted our loft to an additional bedroom when we saw the amazing views towards the city and Suspension Bridge. We've seen Brislington change so much over the past 10 years and we're so glad we moved here when we did. Together with our DIY skills and my love of design and décor, we've really made the house our own."

