

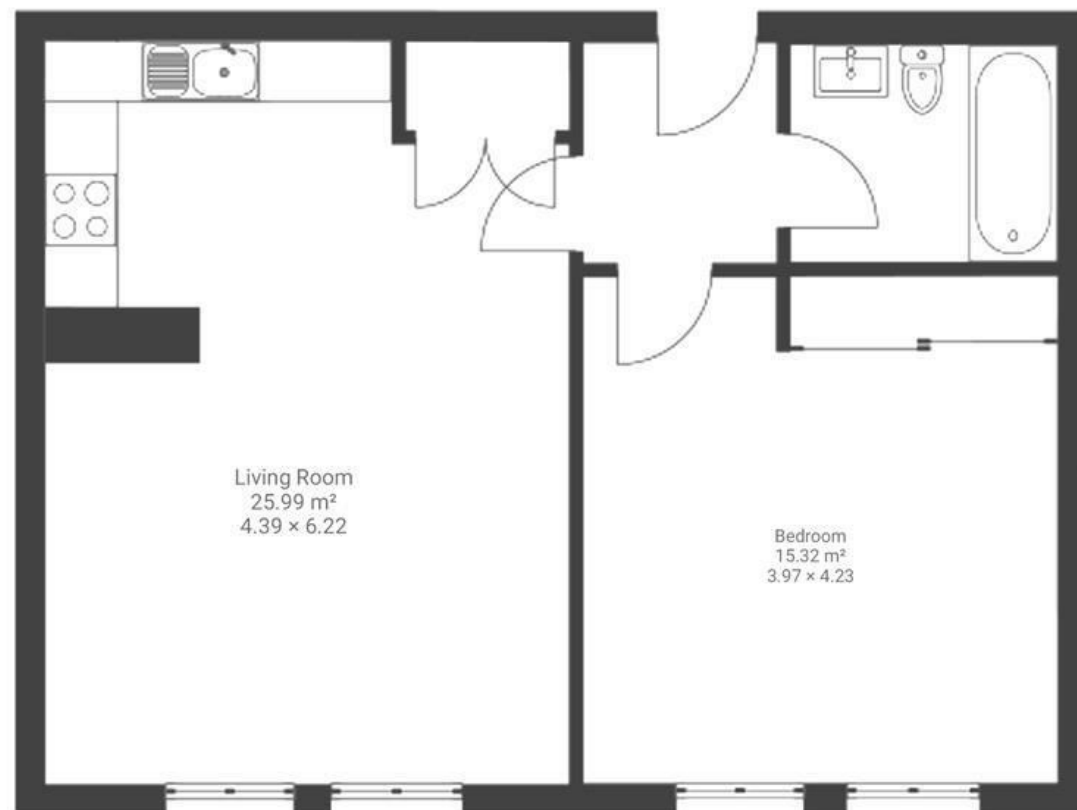
Regent House

BEDMINSTER

APPROXIMATE FLOOR AREA
50.5 SQM / 543 SQFT



FIRST FLOOR



Boardwalk

East Street

BEDMINSTER, BRISTOL



£280,000



1 Bedrooms



BS3 4HH



1 Bathrooms

"We have loved our time living in Factory Number 1, perfectly positioned a 10-minute walk from North Street and Wapping Wharf, but at the same time benefiting from being set back in a peaceful community off East Street. The flat itself is really light and spacious and is a lovely place to live. It's all less than 2 years old, so everything is still new and in excellent condition, with a modern feel throughout. The development is also pet-friendly, so is fantastic for those with furry companions."

