

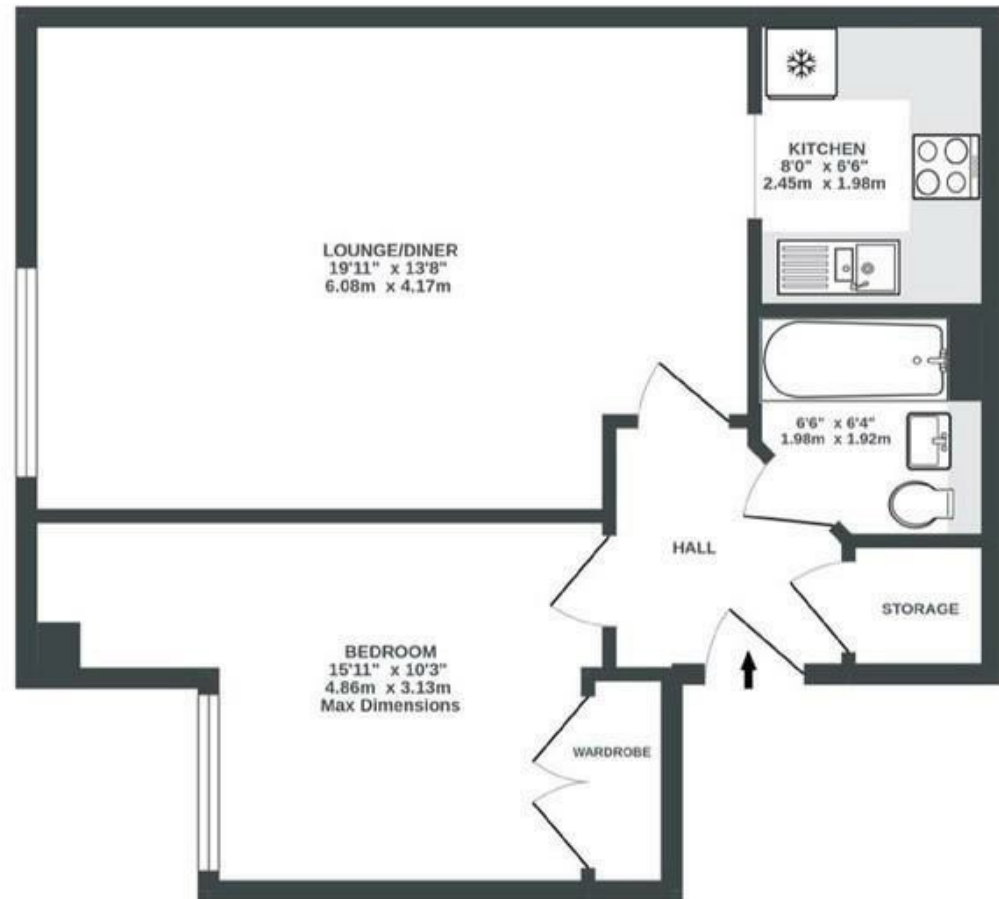
Egerton Court

BISHOPSTON

APPROXIMATE FLOOR AREA
51 SQM / 549 SQFT



FIRST FLOOR



Illustrations are for reference purposes only, measurements are approximate, not to scale.

Boardwalk

Gloucester Road

BISHOPSTON, BRISTOL

£

£250,000

zzz

1 Bedrooms



BS7 8NT



1 Bathrooms

"I bought Flat 4 nearly two years ago because I absolutely love the location. I can walk to everything Gloucester Road has to offer, as well as St Andrews park. The building was deceptively quiet for the location, which was a bonus and the huge bike sheds the building has are a huge bonus. The dedicated parking space was also a big win"

