

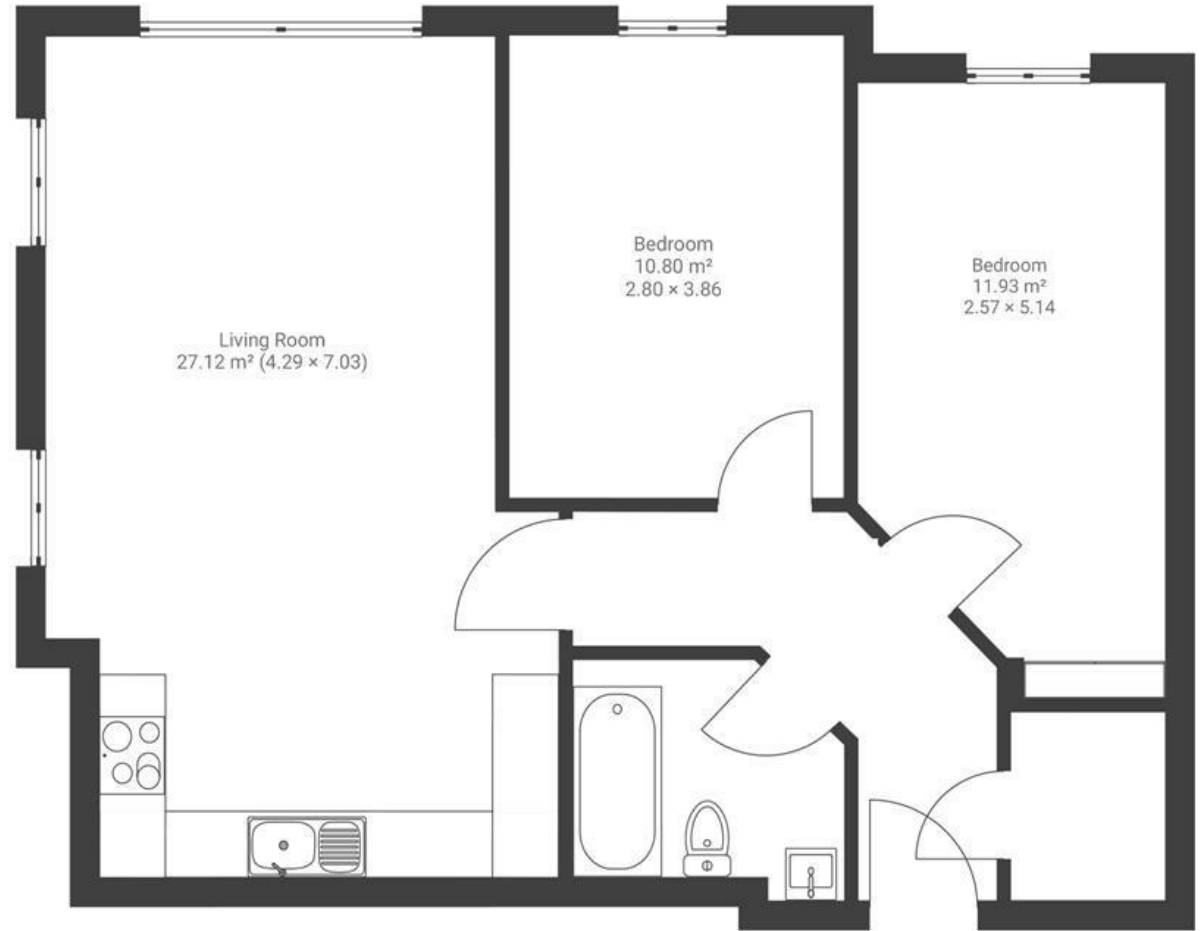
# Paxton Drive

## BEDMINSTER

APPROXIMATE FLOOR AREA  
68 SQM / 731 SQFT



THIRD FLOOR



**Boardwalk**

# Paxton Drive

, BRISTOL



£275,000



2 Bedrooms



Bristol, BS3

2BF



2 Bathrooms

*This is a very bright spacious apartment in a great location that is well connected to the whole of the city, with a short walk leading directly into lovely Greville Smyth Park and minutes from North Street.*

