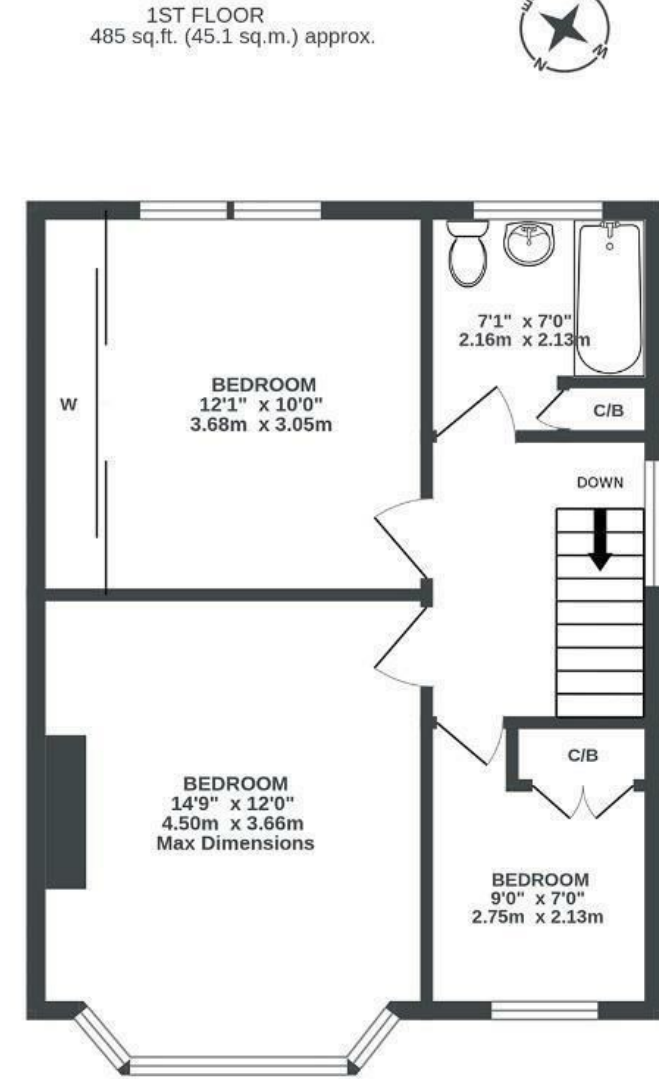
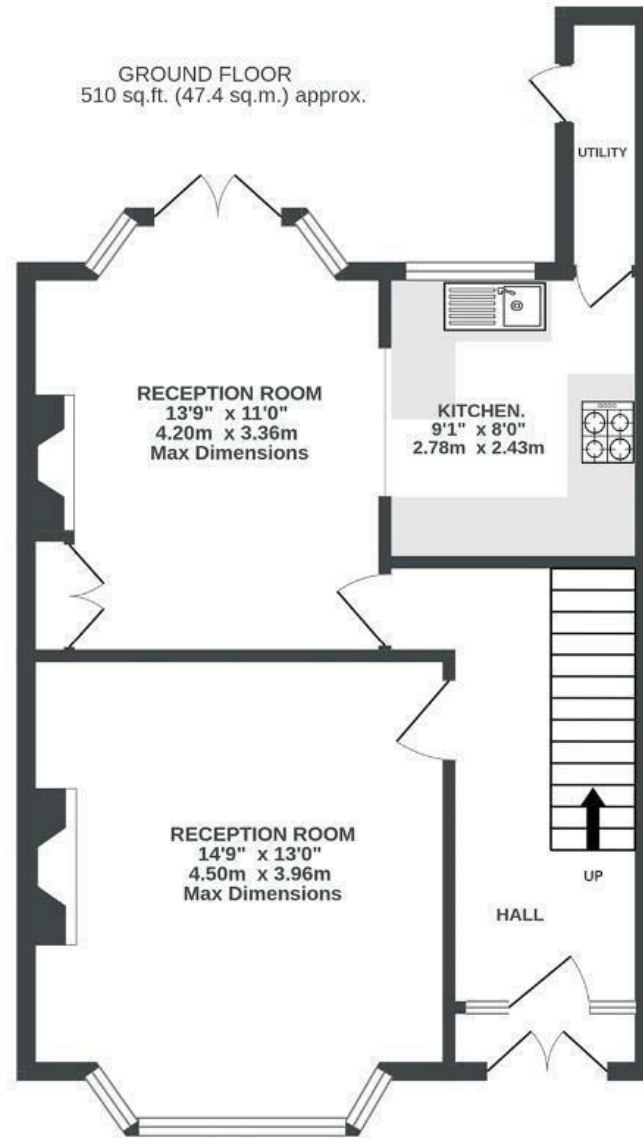


Rookery Road

KNOWLE

APPROXIMATE FLOOR AREA
92.5 SQM / 995 SQFT



Illustrations are for reference purposes only, measurements are approximate, not to scale.

Boardwalk

Rookery Road , BRISTOL



£585,000



3 Bedrooms



Bristol, BS4
2DX



1 Bathrooms

"Since moving into Rookery Road we have welcomed two children and it's been a great place to start our family. Knowle is still close to the centre with great bus links from Wells Road and pleasant cycles into town, but it immediately felt peaceful from the moment we moved in. Sitting in the tranquil garden with big trees behind doesn't feel urban at all and the view over Bristol to the suspension bridge lets you soak up the city without the noise and stress."

