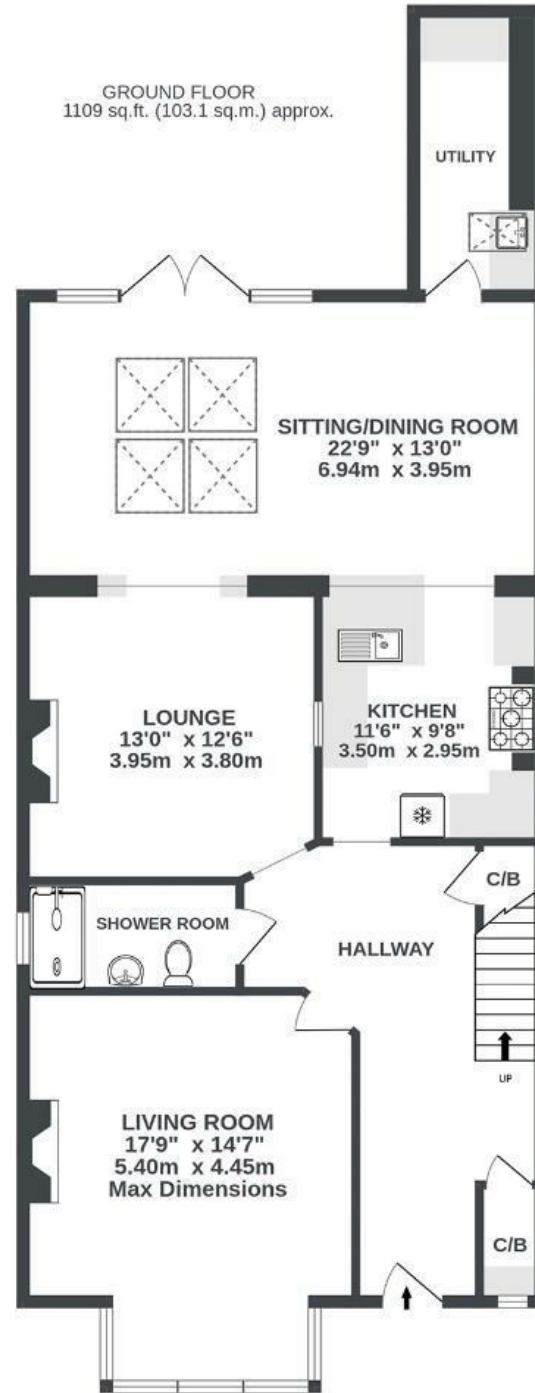


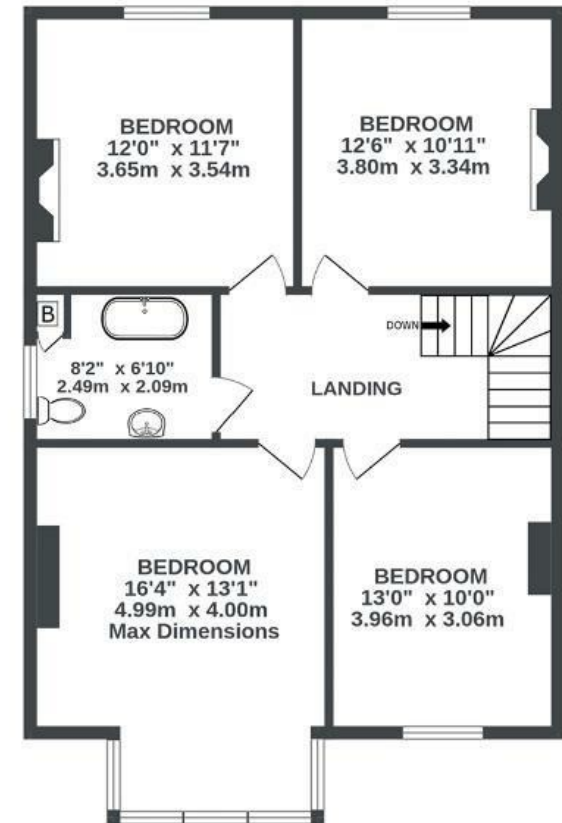
Overnhill Road

DOWNEND

APPROXIMATE FLOOR AREA
174.3 SQM / 1876 SQFT



1ST FLOOR
767 sq.ft. (71.2 sq.m.) approx.



Illustrations are for reference purposes only, measurements are approximate, not to scale.

Boardwalk

Overnhill Road , BRISTOL

£

£700,000

zZz

4 Bedrooms



Bristol, BS16
5DN



2 Bathrooms

"For us it just had to be Overnhill; the quiet tree lined road, gorgeous spacious houses, easy access to local shops and, most importantly, a short walk to the excellent infant and junior schools. So we waited patiently and then pounced on number 20 when the opportunity arose. Now, 26 years later, it is job done - the boys have their own homes - and it is time to move on to somewhere smaller and to give someone else the opportunity to benefit from all that this lovely family home has to offer."

