

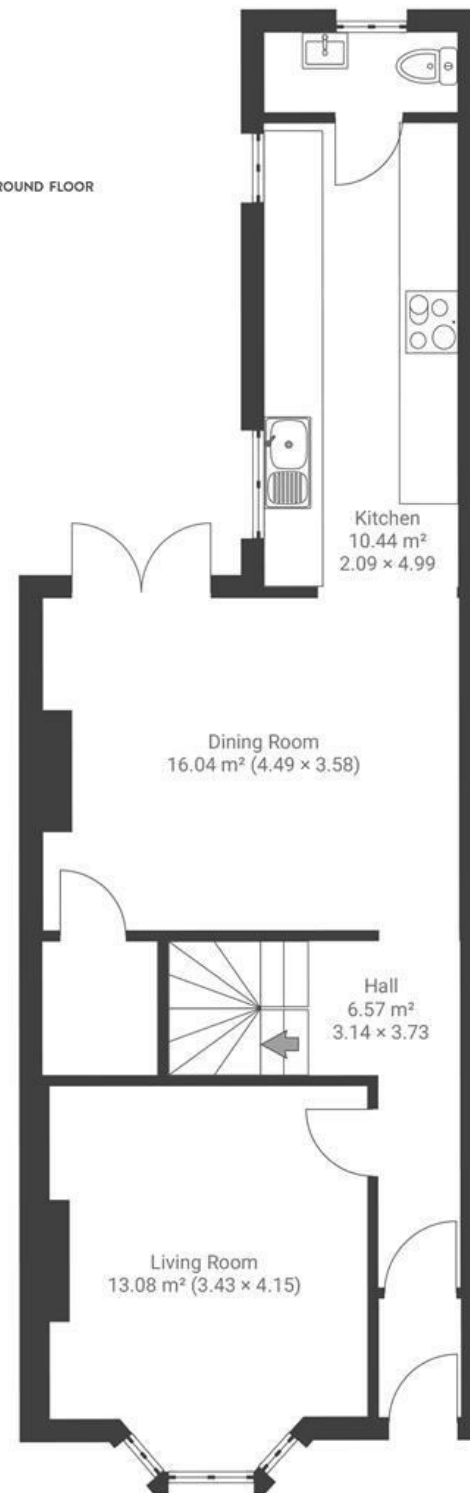
Dunkerry Road

BEDMINSTER

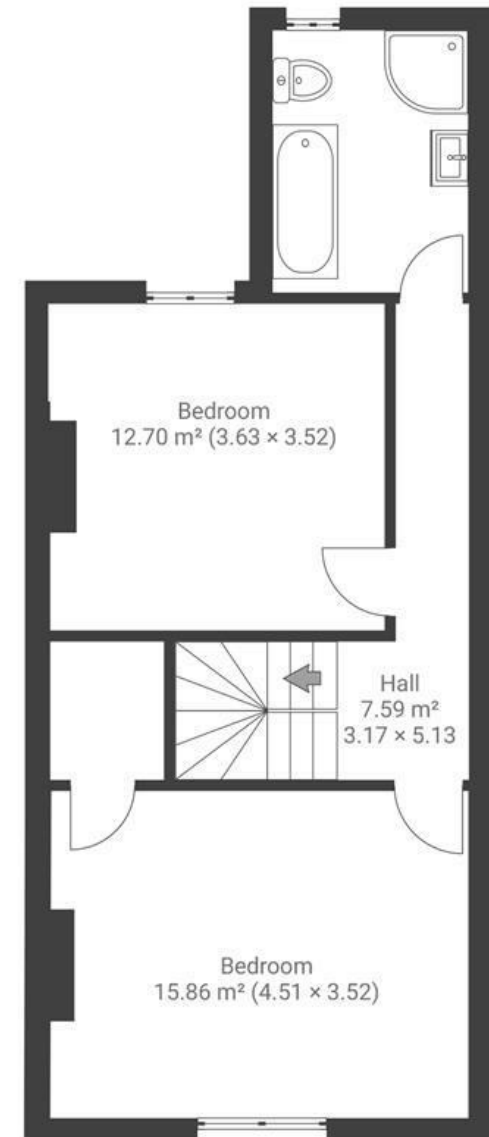
APPROXIMATE FLOOR AREA
98 SQM / 1062 SQFT



GROUND FLOOR



FIRST FLOOR



Boardwalk

Dunkerry Road , BRISTOL



£450,000



2 Bedrooms



Bristol, BS3



1 Bathrooms

41 R

"Dunkerry Road was the perfect location for our first home. We have loved the proximity to Victoria Park, especially since having our daughter. It's also been amazing to have both Wapping Wharf and North St in walking distance. The Victoria Park pub is a 2 minute walk away and we have spent many a summer evening in their garden. The house itself has been a perfect first home for us. We were initially drawn to it because of its period features and spacious bedrooms, alongside the garden which we have since landscaped."

