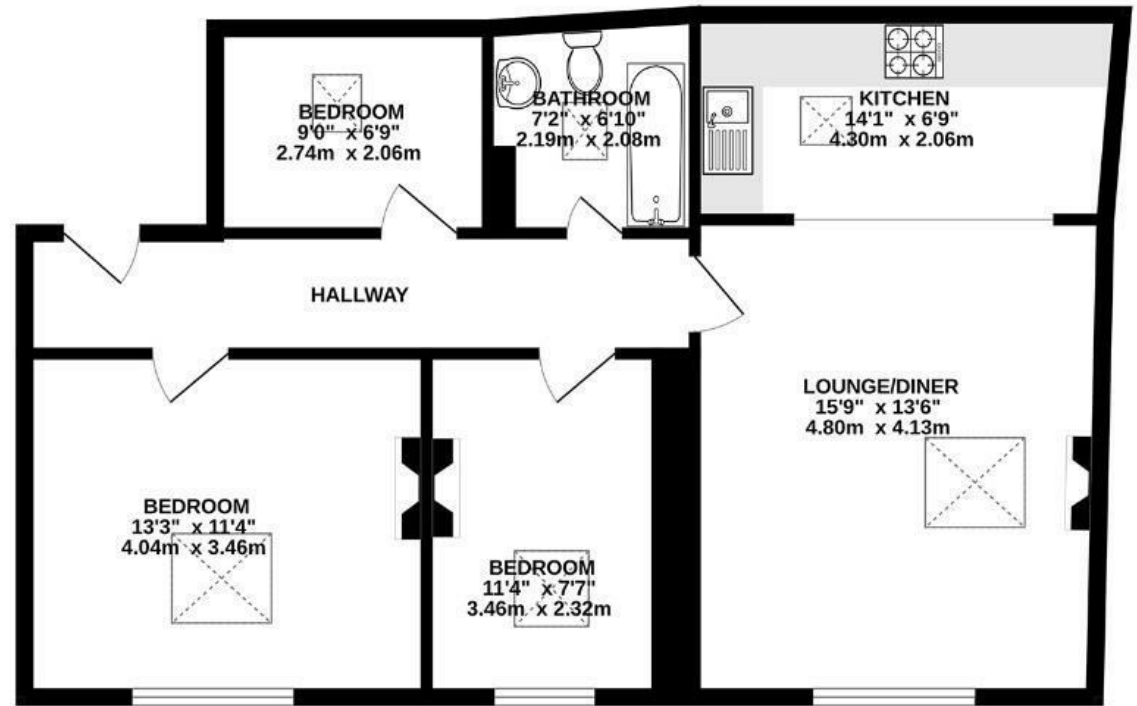


Saville Place

CLIFTON

APPROXIMATE FLOOR AREA
67.7SQM / 729 SQFT



Illustrations are for reference purposes only, measurements are approximate, not to scale.

Boardwalk

Saville Place

, BRISTOL

£

£415,000



BS8 4EJ

zzz

3 Bedrooms



1 Bathrooms

"The first time I stepped inside East Loft, I was immediately struck by the wonderful beams which give it such character. It's a really bright and airy space, thanks to the high ceilings and skylight windows in every room – on sunny days the light moves around the flat and streams in from one side or the other. In winter, it's warm and cosy and has been my safe haven for the last 20 years – I'm only moving on because it's time for a change!"

