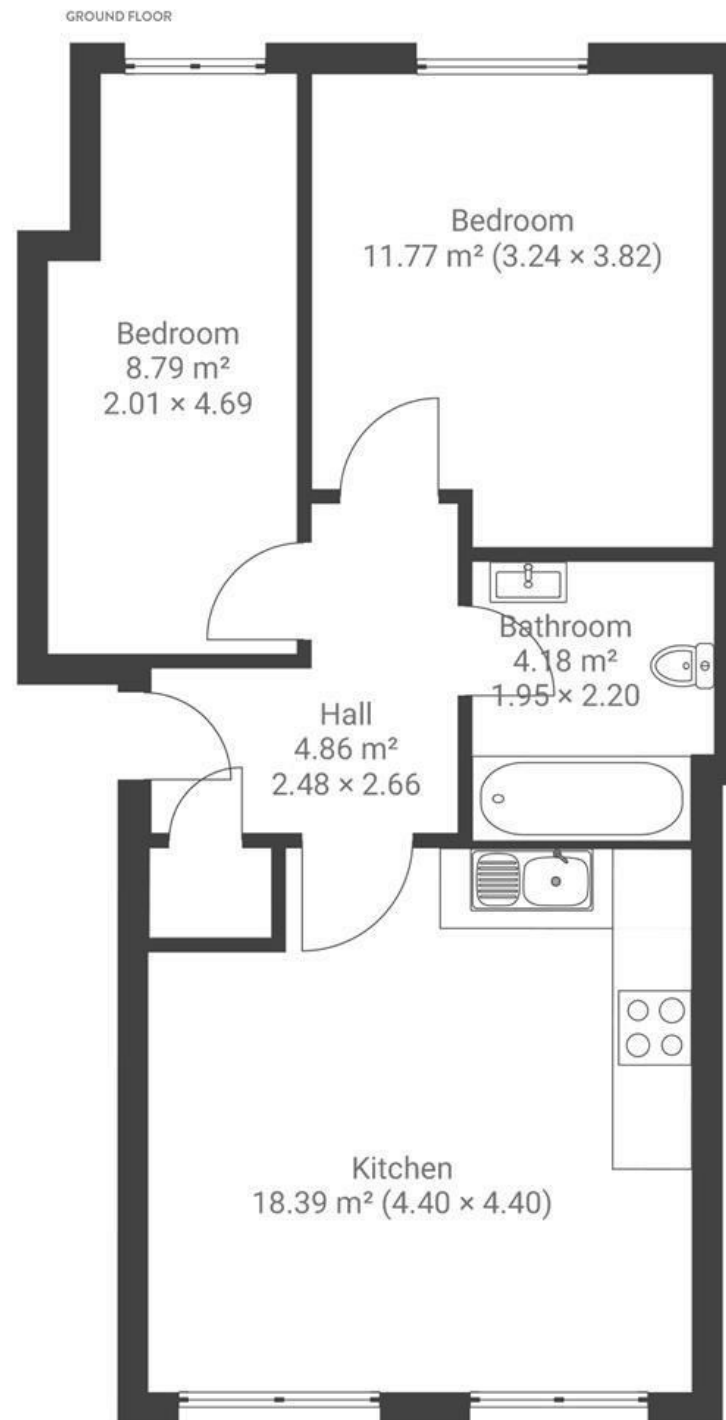


Raleigh Road

BEDMINSTER

APPROXIMATE FLOOR AREA
50.9 SQM / 547 SQFT



Boardwalk

Raleigh Road

SOUTHVILLE, BRISTOL



£300,000



2 Bedrooms



BS3 1FL



1 Bathrooms

"I've loved living in Southville over the last couple of years. North Street is incredible, packed with cafés, delis, and restaurants. I've spent many summer evenings in beer gardens - The Tobacco Factory and The Spotted Cow are definite favourites. Greville Smyth Park is a great place to hang out, and as a sports fan, having Ashton Gate on the doorstep for both football and rugby has been a real bonus. Being within walking distance of the City Centre and work has made life so convenient."

