

Maple Street

HENGROVE

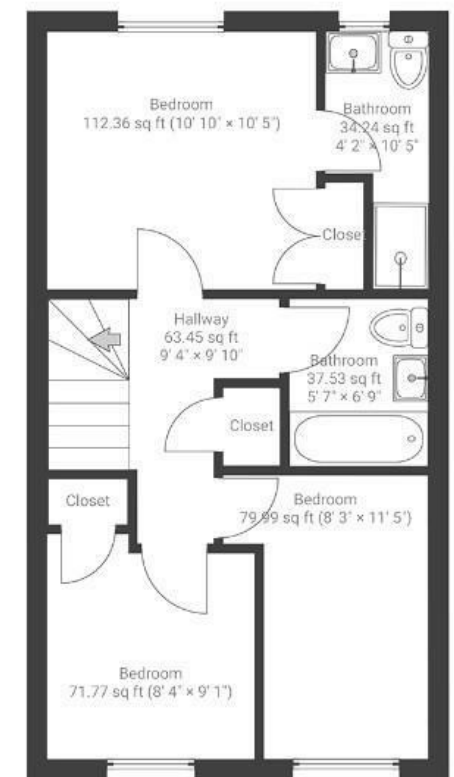
APPROXIMATE FLOOR AREA
88 SQM / 947 SQFT



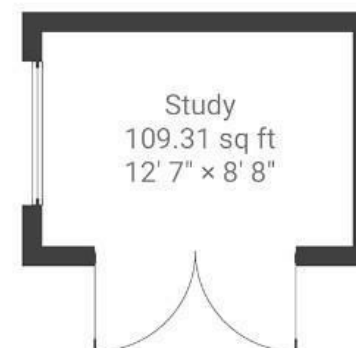
GROUND FLOOR



FIRST FLOOR



OUTBUILDING



Boardwalk

Maple Street

HENGROVE, BRISTOL



£390,000



BS14 0GB



3 Bedrooms



2 Bathrooms

"We've loved living here for the past six years and starting our family. The kitchen-diner has been the heart of our home, which we love to share when hosting friends and family. The sunny garden is one of our favourite spots to relax or play football with our son. Our home feels like an escape from city life for our young family, thanks to the hidden nature reserve with its wild goats, and the ample green space at the airfield and Hengrove Park on the doorstep."

