

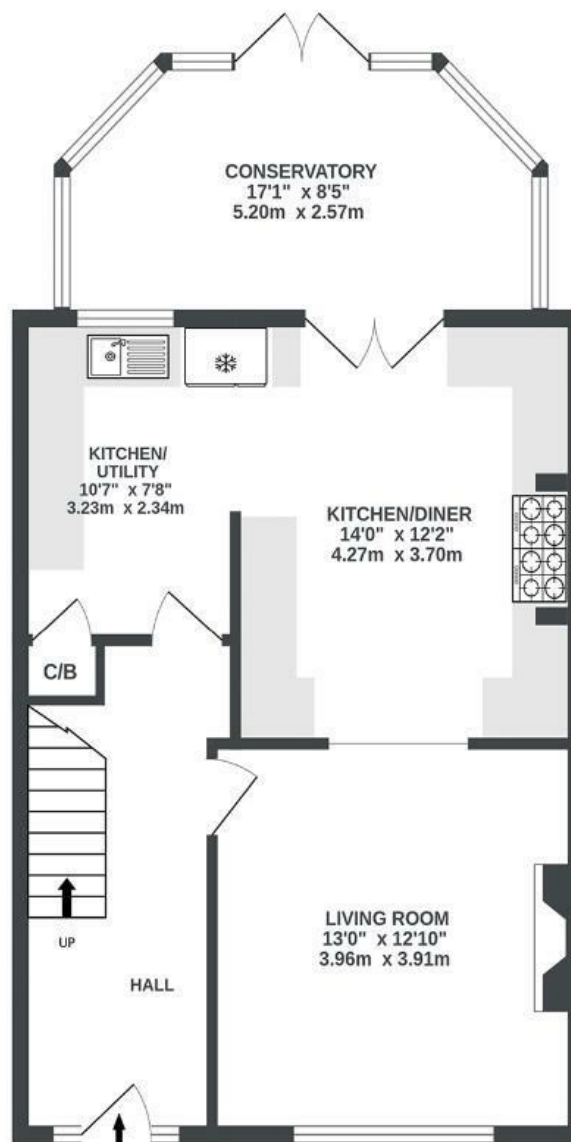
# Ashville Road

## ASHTON

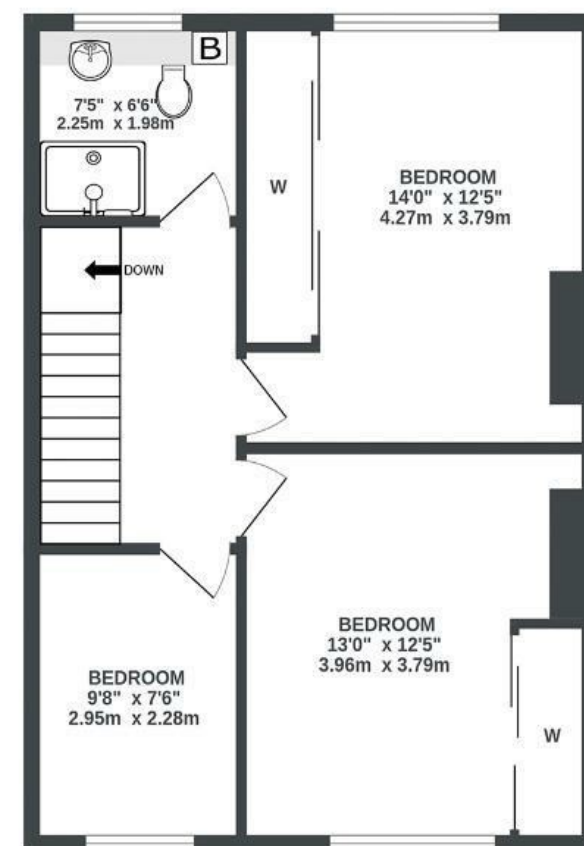
APPROXIMATE FLOOR AREA  
109.9 SQM / 1183 SQFT



GROUND FLOOR  
655 sq.ft. (60.9 sq.m.) approx.



1ST FLOOR  
527 sq.ft. (49.0 sq.m.) approx.



Illustrations are for reference purposes only, measurements are approximate, not to scale.

**Boardwalk**

# Ashville Road

ASHTON, BRISTOL



£550,000



3 Bedrooms



BS3 2AP



1 Bathrooms

*"This has been the perfect home to raise our young family. It's spacious, with lots of room for toys, prams, and scooters, and the parking space is a godsend in this busy area. The big garden has lots of space for our kids to run around. We love the buzzing high street, the yummy treats at the Sunday market, and the walks and bike rides at Ashton Court. Our neighbours are amazing, and we will miss them. It's such a happy place to live, and we know the next family will love it just as much as us."*

