

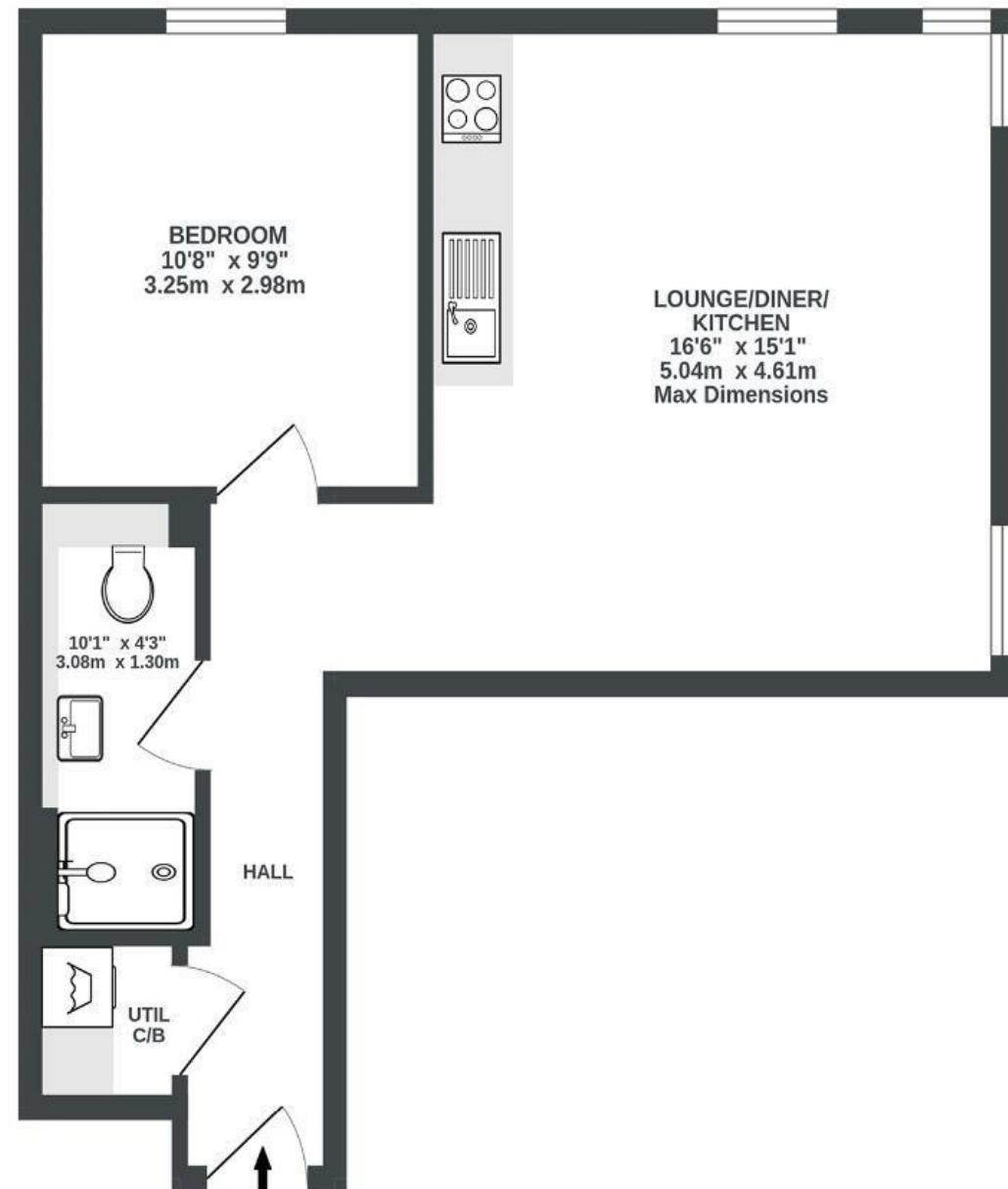
# Decourcy House

## STOKES CROFT

APPROXIMATE FLOOR AREA  
42 SQM / 452 SQFT



FIRST FLOOR  
452 sq.ft. (42.0 sq.m.) approx.



Illustrations are for reference purposes only, measurements are approximate, not to scale.

**Boardwalk**

# Decourcy House

UPPER YORK STREET, BRISTOL



£225,000



1 Bedrooms



BS2 8FT



1 Bathrooms

*"We've loved the bright, open-plan living space — stylish yet cosy, with large windows that let in loads of natural light. The location is fantastic: a short walk to Cabot Circus, the Harbourside and Gloucester Road with amazing cafes and restaurants nearby. Saturday trips to Farro for coffee and fresh sourdough became a favourite ritual! There's so many green spaces like Castle Park and The Downs for weekend strolls and picnics. Such a special place to live!!"*

