

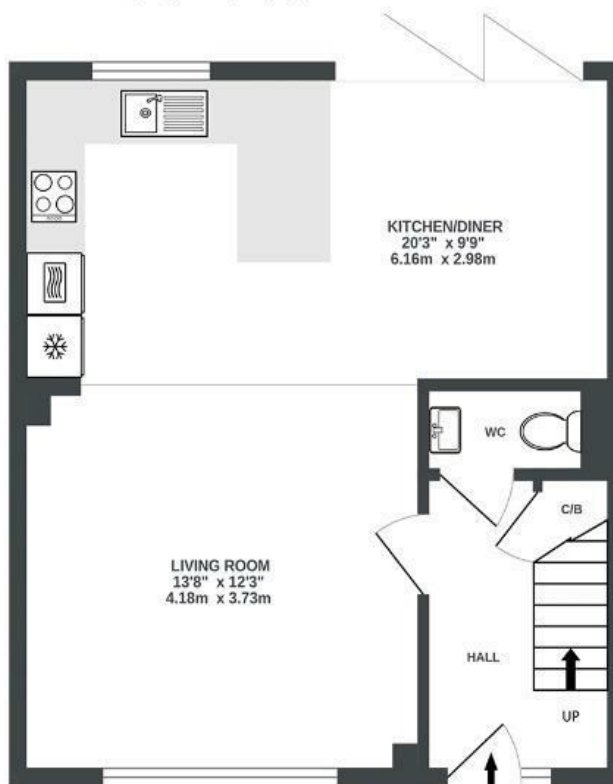
Blaisdon Close

HENBURY

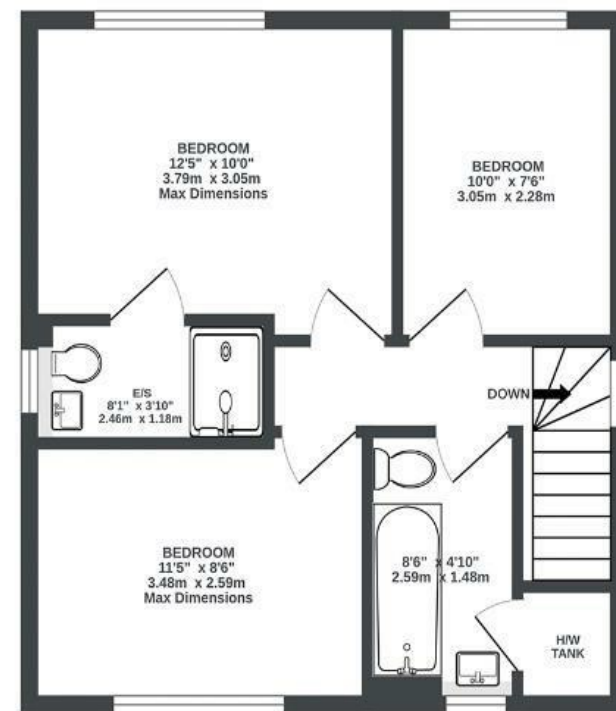
APPROXIMATE FLOOR AREA
80.1 SQM / 862 SQFT



GROUND FLOOR
439 sq.ft. (40.8 sq.m.) approx.



1ST FLOOR
423 sq.ft. (39.3 sq.m.) approx.



Illustrations are for reference purposes only, measurements are approximate, not to scale.

Boardwalk

Blaisdon Close

, BRISTOL



£450,000



BS10 7BW



3 Bedrooms



2 Bathrooms

"The new build is truly a dream home! What I love most about my new home is its incredible balance. It's nestled in a tranquil cul-de-sac, providing that sought-after quiet living, yet I have incredibly easy access to all the local amenities in Westbury-on-Trym. Plus, with Blaise Castle and a forest practically on my doorstep, I get the best of both worlds – nature's embrace and urban convenience. The friendly community here just makes it all the more special."

