

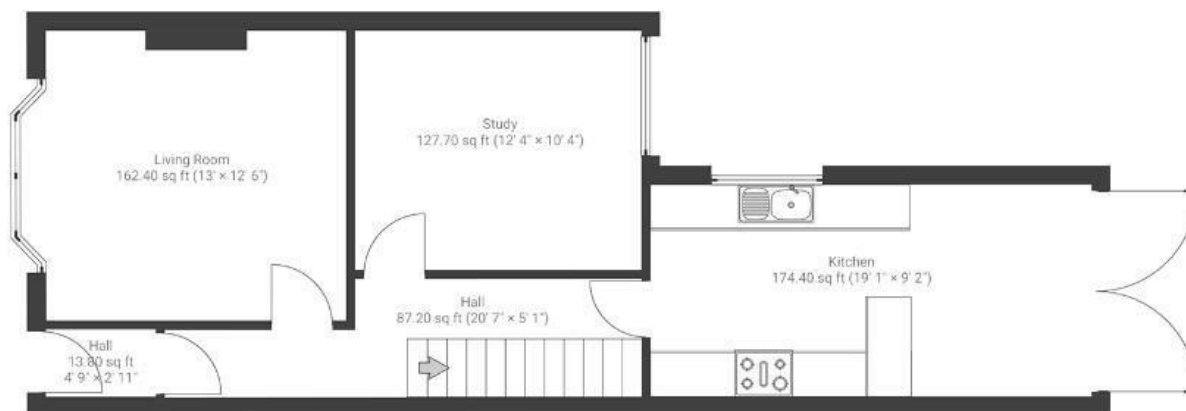
# Churchill Road

## BRISLINGTON

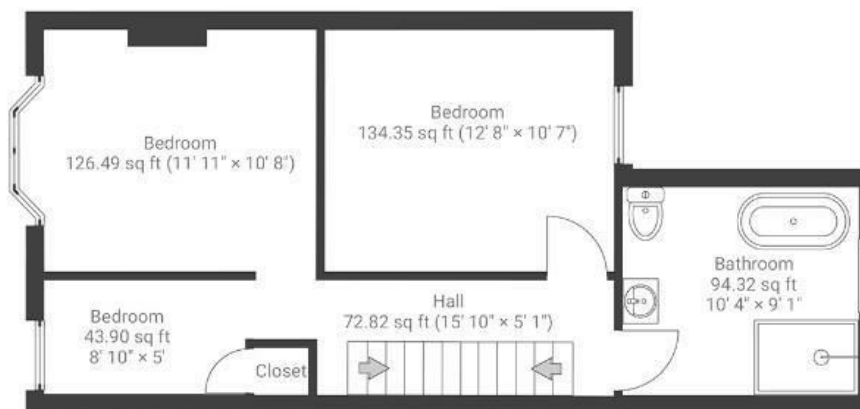
APPROXIMATE FLOOR AREA  
122 SQM / 1322 SQFT



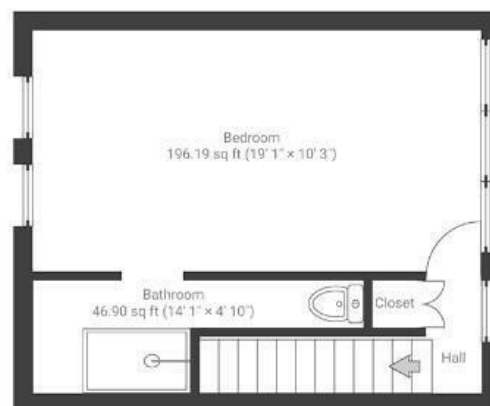
### GROUND FLOOR



### FIRST FLOOR



### SECOND FLOOR



Boardwalk

# Churchill Road

, BRISTOL



£540,000



4 Bedrooms



BS4 3RN



2 Bathrooms

*" Since moving here almost 10 years ago our home has seen a lot of life. It had been tenanted for 20 years and a lot of hard work, energy and love went into renovating it from top to bottom, and in recent years completing it with the loft conversion. The light in this house is incredible and has always been my favourite aspect, from bright mornings with a cup of coffee in the kitchen to warm and sun filled living and bedrooms, dreamy! Drinks at the end of the garden get the evening sun too "*

