

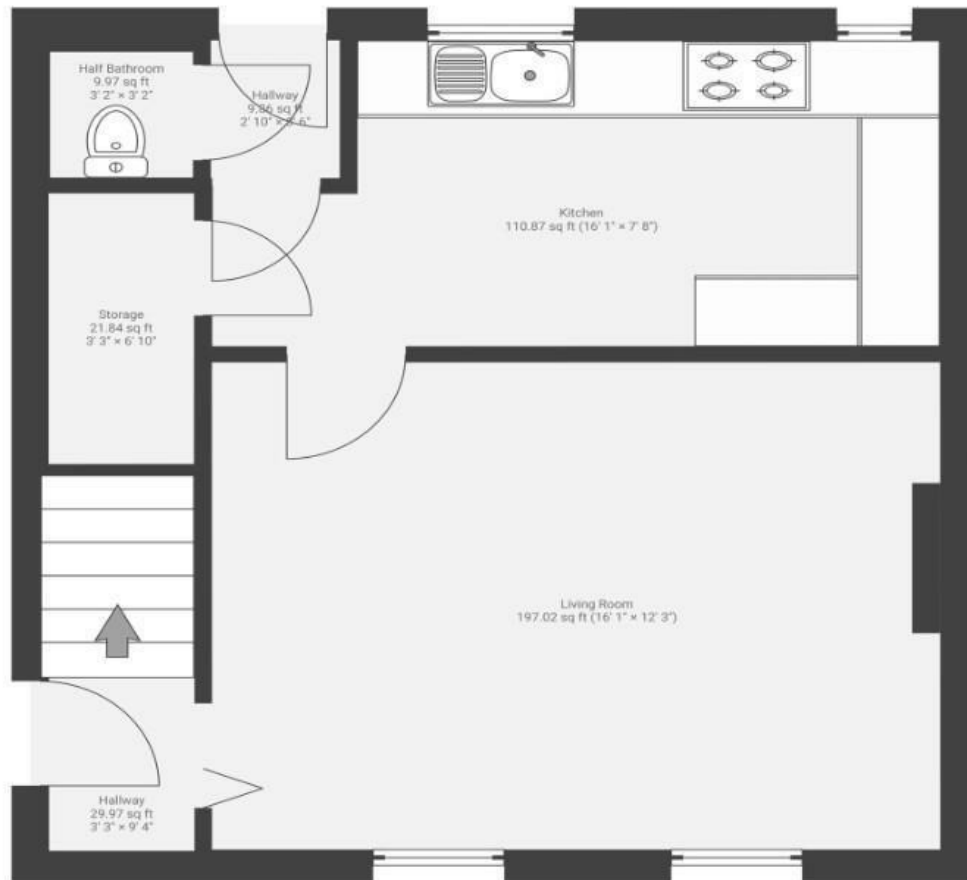
Meadow Vale

ST. GEORGE

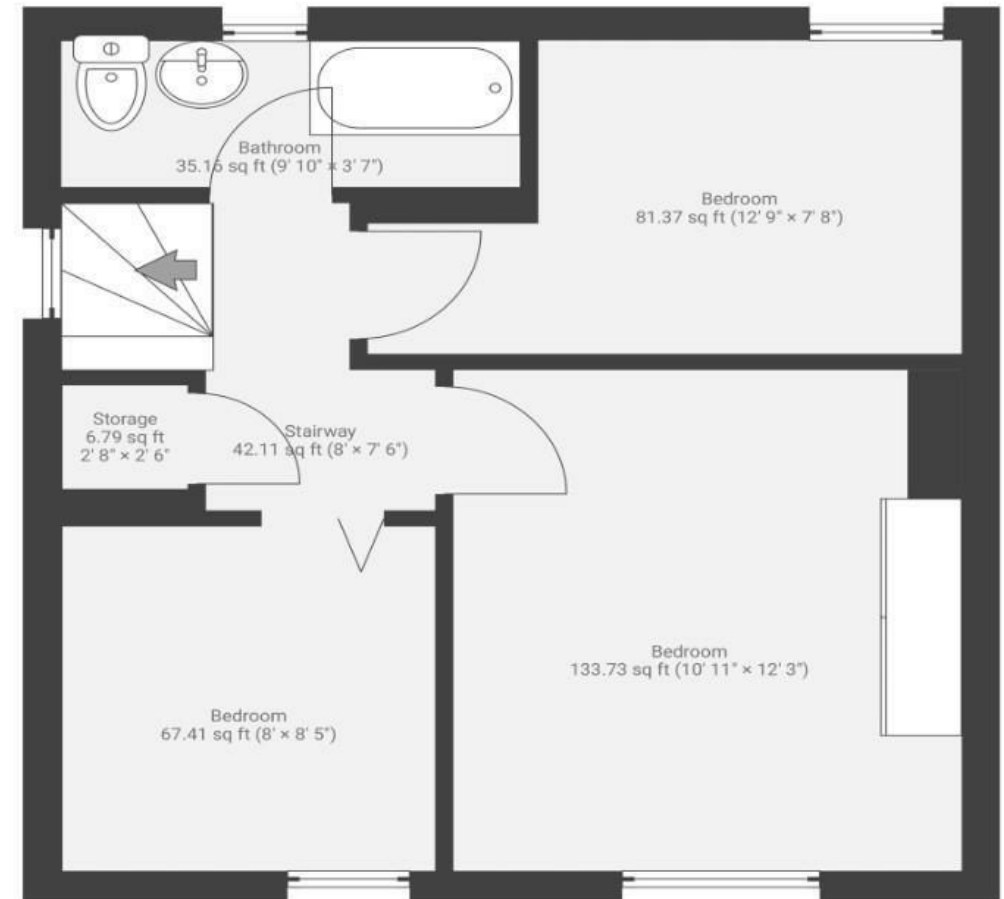
APPROXIMATE FLOOR AREA
71.0 SQM / 764 SQFT



GROUND FLOOR



FIRST FLOOR



Illustrations are for reference purposes only, measurements are approximate, not to scale.

Boardwalk

Meadow Vale

, BRISTOL



£250,000



3 Bedrooms



BS5 7RF



2 Bathrooms

"Our 5 years at Meadow Vale have been wonderful. The area is quiet, but filled with families so has a great sense of community. We loved spending our time on dog walks making the most out of all the nearby green spaces, including St George's Park."

