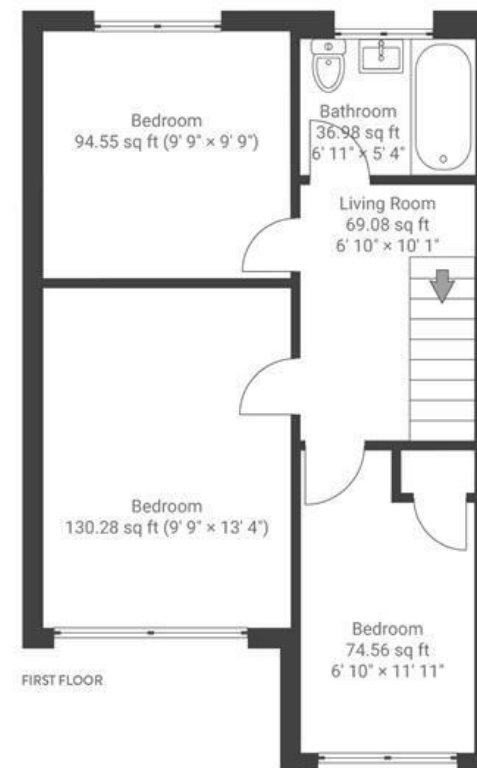
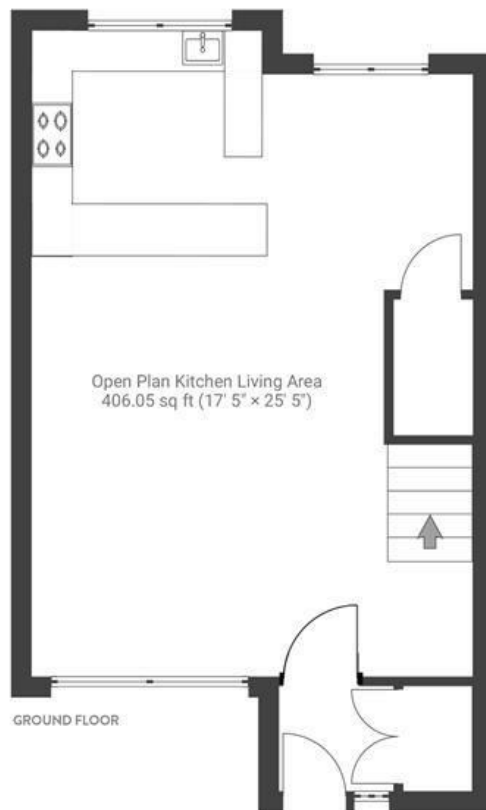


# St. Andrews Road

## MONTPELIER

APPROXIMATE FLOOR AREA  
85 SQM / 915 SQFT



**Boardwalk**

# St. Andrews

MONTPELIER, BRISTOL



£600,000



3 Bedrooms



BS6 5EJ



1 Bathrooms

"We love mid-century property, so it was exciting when this house came up - we immediately saw its potential. It was a lot of fun designing, renovating, and seeing it emerge. It's a beautiful, warm, light space to live in. The deck is the perfect suntrap for a morning coffee, and the back garden is perfect for a post work G&T. The open plan kitchen and lounge is brilliant for cooking and entertaining, and the bi-fold window to the garden provides a full connection to the outside for summer BBQ's. The neighbours are lovely, there's a friendly sense of community on the street where everyone looks out for each other. It's a quiet location, despite being so central and convenient. We'll be sad to leave, and are only moving due to relocation."

