

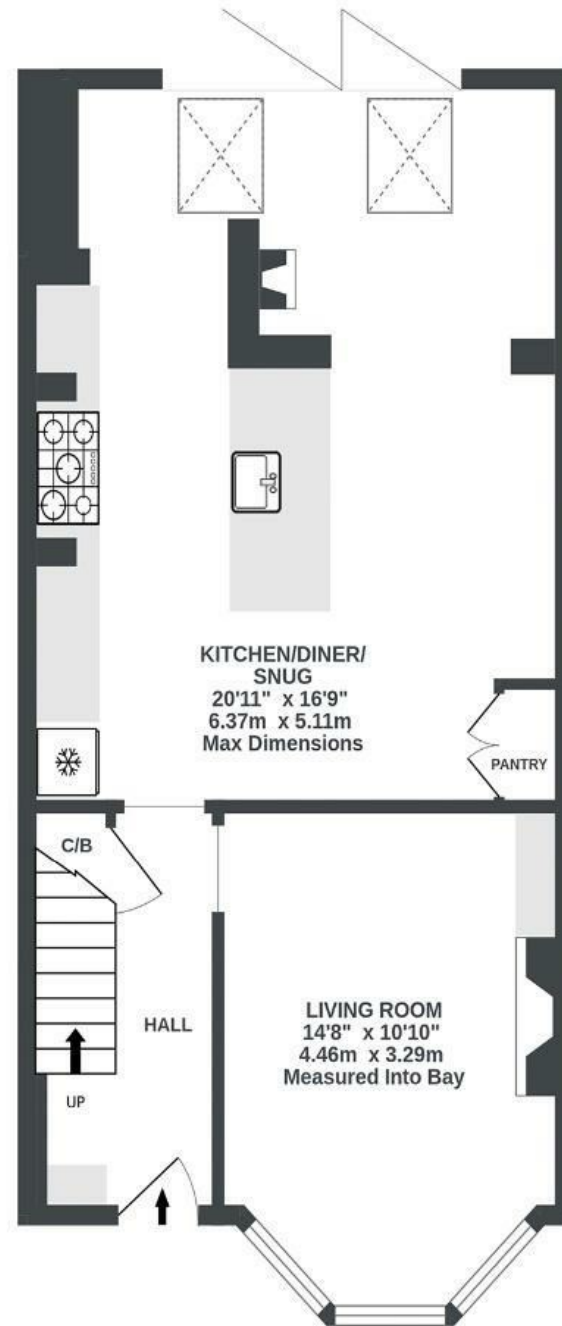
# Sandringham Road

BRISLINGTON

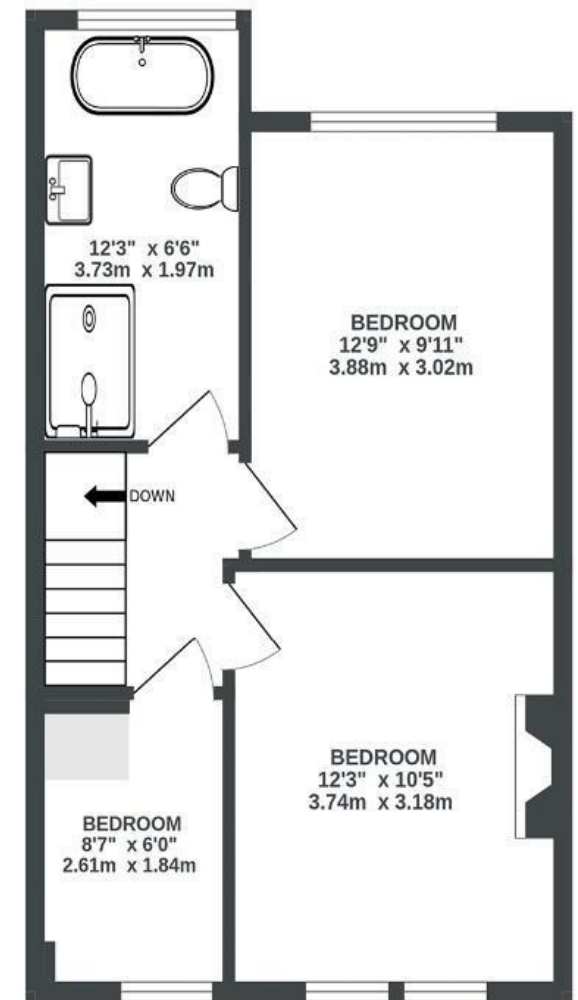
APPROXIMATE FLOOR AREA  
89.4 SQM / 962 SQFT



GROUND FLOOR  
538 sq.ft. (50.0 sq.m.) approx.



1ST FLOOR  
424 sq.ft. (39.4 sq.m.) approx.



Illustrations are for reference purposes only, measurements are approximate, not to scale.

**Boardwalk**

# Sandringham

, BRISTOL



£450,000



3 Bedrooms



BS4 3PR



1 Bathrooms

*" Sandringham Road is a beautiful community to live in with a lovely deli and coffee shop nearby. The house has been a fantastic home, it's been great hosting lots of friends in the kitchen/diner. The best bits are enjoying summer days with the bifolds open to the perennial garden; and winters cosy on the couch next to the woodburner. It's a peaceful area, with nice woodland walks and parks nearby the schools too. I love sitting in the lounge with the huge views of Bristol out of the window to catch the sunsets. "*

