

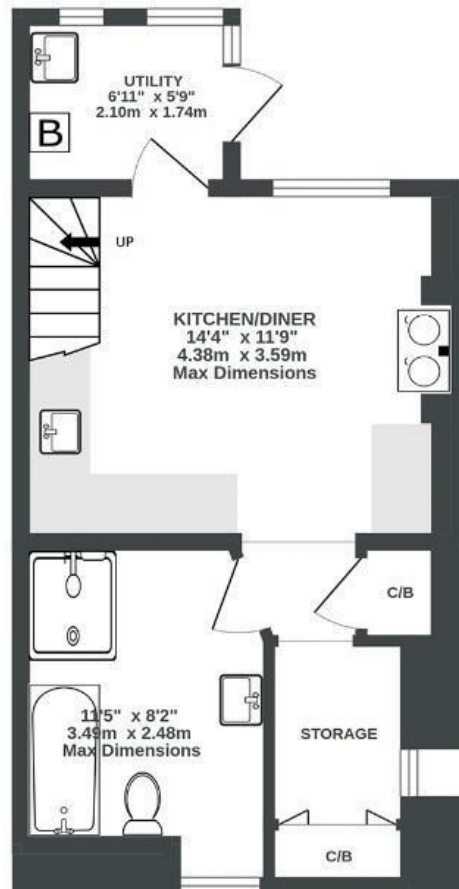
# Upper Cheltenham Place

MONTPELIER

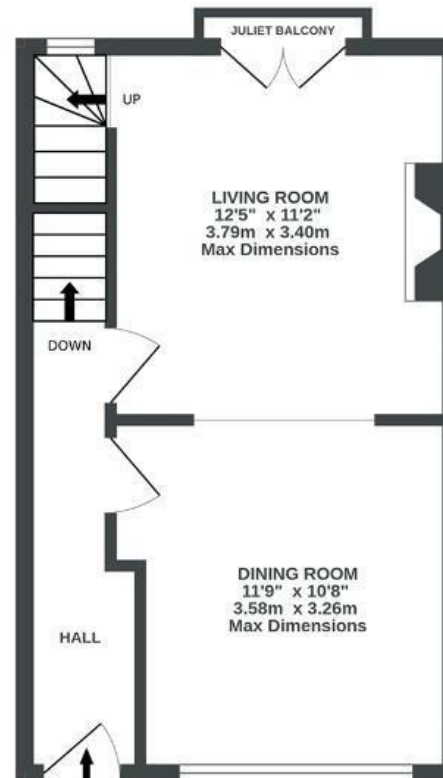
APPROXIMATE FLOOR AREA  
93.8 SQM / 1010 SQFT



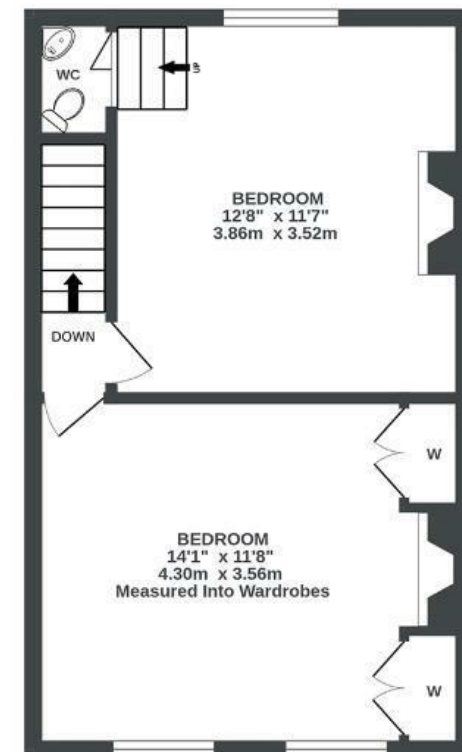
LOWER GROUND FLOOR  
344 sq.ft. (32.0 sq.m.) approx.



GROUND FLOOR  
332 sq.ft. (30.8 sq.m.) approx.



1ST FLOOR  
334 sq.ft. (31.0 sq.m.) approx.



Illustrations are for reference purposes only, measurements are approximate, not to scale.

Boardwalk

# Upper , BRISTOL

£

£600,000



BS6 5HR

zzz

2 Bedrooms



1 Bathrooms

*“Our Aga is the cosy heart of our home and we love having the balcony doors flung open to the beautiful, peaceful gardens. We’ll miss morning tea in bed, hearing the birdsong and watching a hot air balloon float by”*

