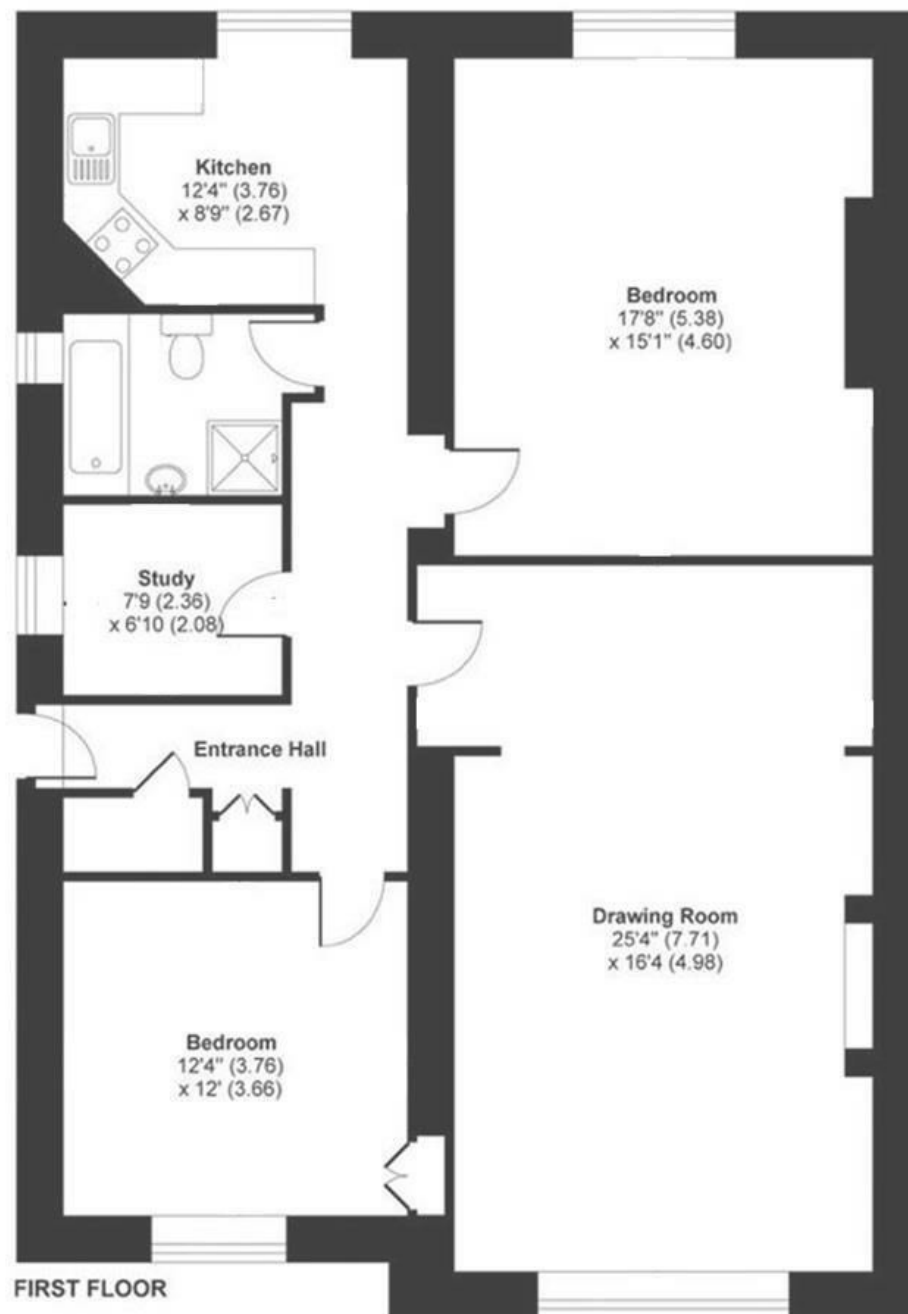


Belgrave Road

CLIFTON

APPROXIMATE FLOOR AREA
115 SQM / 1237 SQFT



Boardwalk

Belgrave Road

, BRISTOL

£

£545,000



BS8 2AB

zzz

2 Bedrooms



1 Bathrooms

"Incredible location, everything you could want for an active social life in your doorstep such as gyms (we love Bpro fitness), coffee shops, vibrant bars, amazing restaurants, beautiful walks such as Clifton Downs and the Harbourside. Really beautiful and safe area. Great transport connections to London, which has been ideal for us as one of us works in London every week. The property itself - so spacious and the living room is a showstopper and has been fantastic for hosting."

