

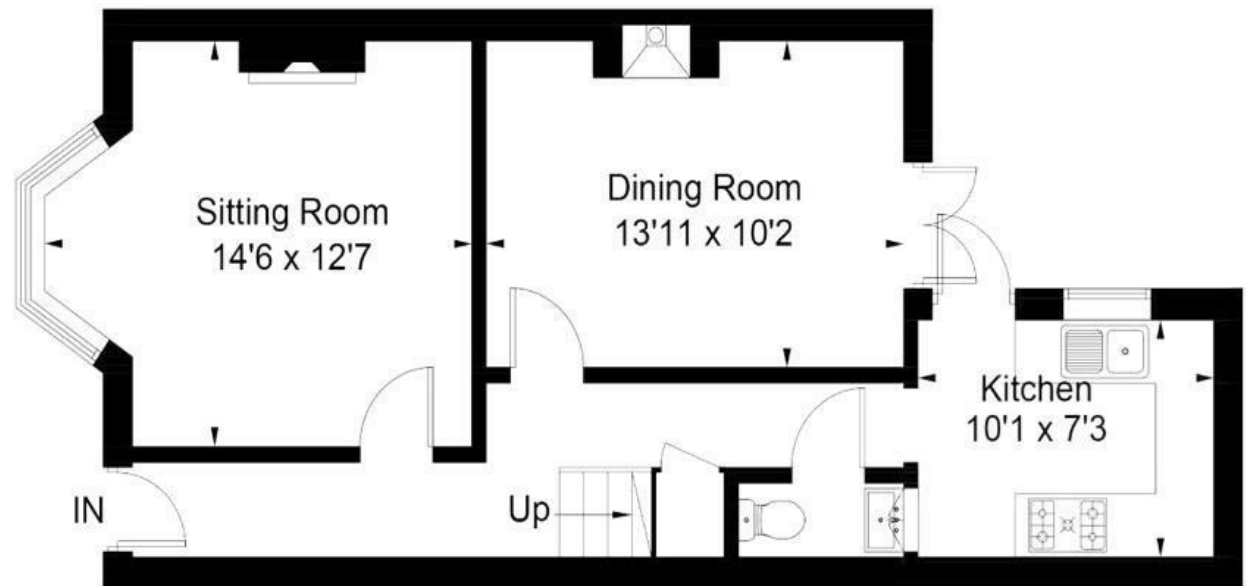
Islington Road

SOUTHVILLE

APPROXIMATE FLOOR AREA
102.6 SQM / 1104 SQFT



First Floor



Ground Floor

Illustrations are for reference purposes only, measurements are approximate, not to scale.

Boardwalk

Islington Road , BRISTOL



£525,000



BS3 1QB



3 Bedrooms



2 Bathrooms

"We've absolutely loved living in Southville. The street has a really warm community with such lovely neighbours. The garden is a real sun trap, and it always feels calm and incredibly quiet. The views of the city change with the seasons, from sunsets over Wills Memorial, to a landscape of balloons flying overhead. North Street is just around the corner, and the harbour and cargo being such a short walk away. It's been a special home for us, and we hope it brings as much joy to the next owners."

