

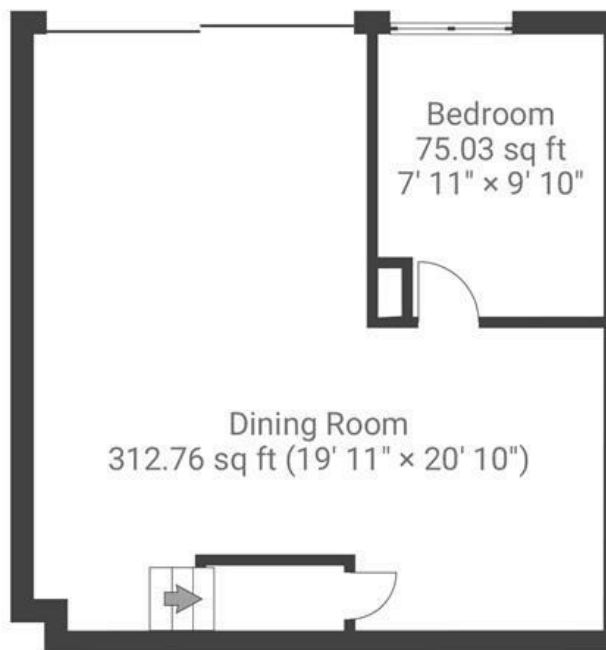
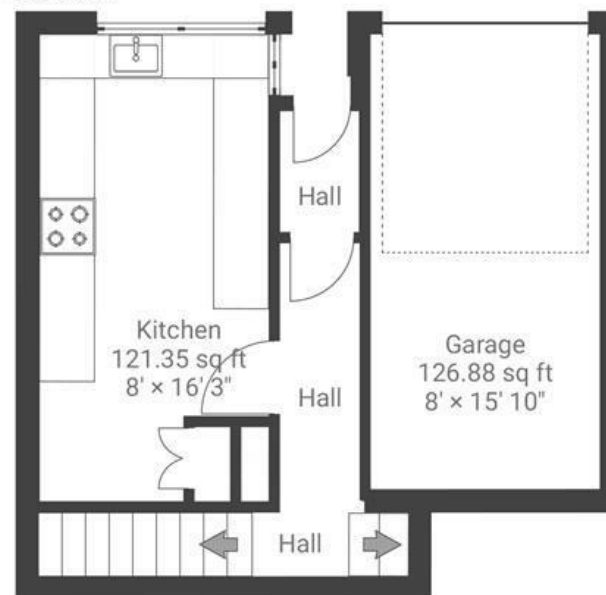
# Trendlewood Park

## FISHPONDS

APPROXIMATE FLOOR AREA  
99 SQM / 1065 SQFT

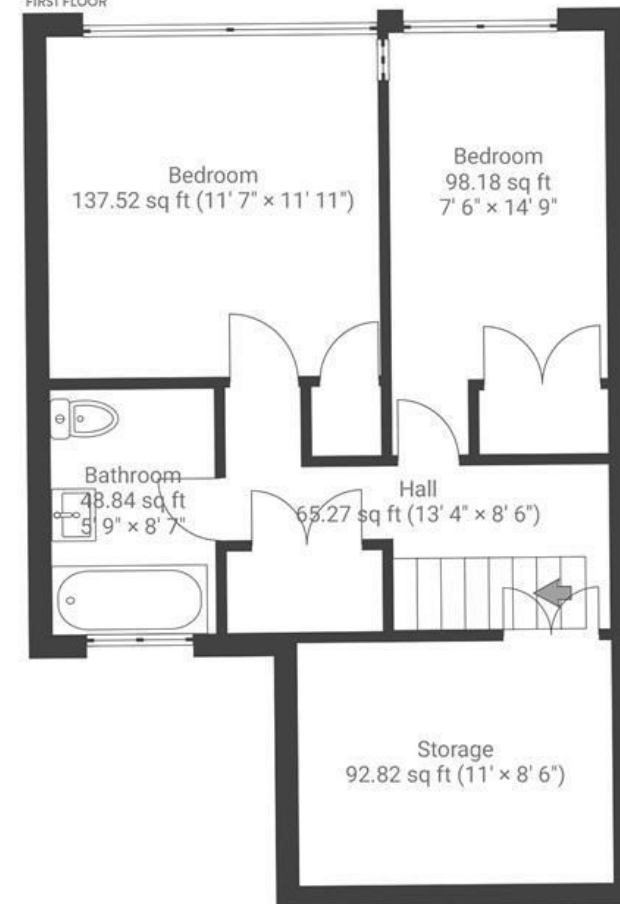


GROUND FLOOR



LOWER GROUND FLOOR

FIRST FLOOR



**Boardwalk**

# Trendlewood

FISHPONDS, BRISTOL

£

£375,000

zzz

3 Bedrooms



BS16 1TE



1 Bathrooms

*"Our home is a happy house, it is filled with light and surrounded by nature. There is a fantastic community of young families here and Trendlewood is surrounded by the best green spaces and nature in Bristol. We love going to the River Frome which is only a few minutes away and is great for walking with our dog or going for a run."*

