

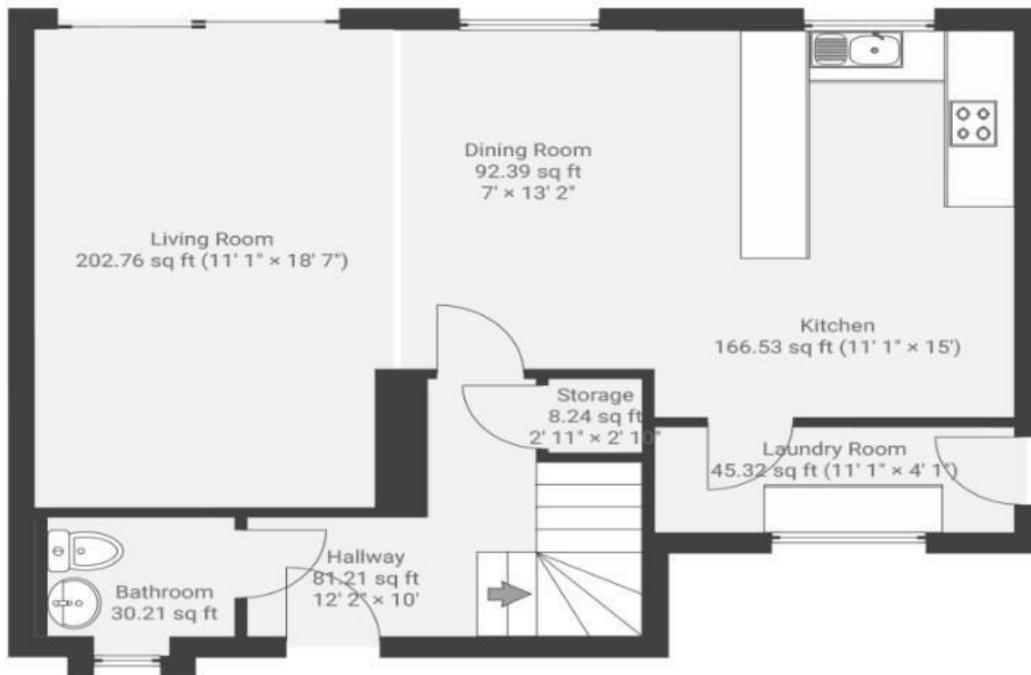
# John Martin Gardens

STANDISH

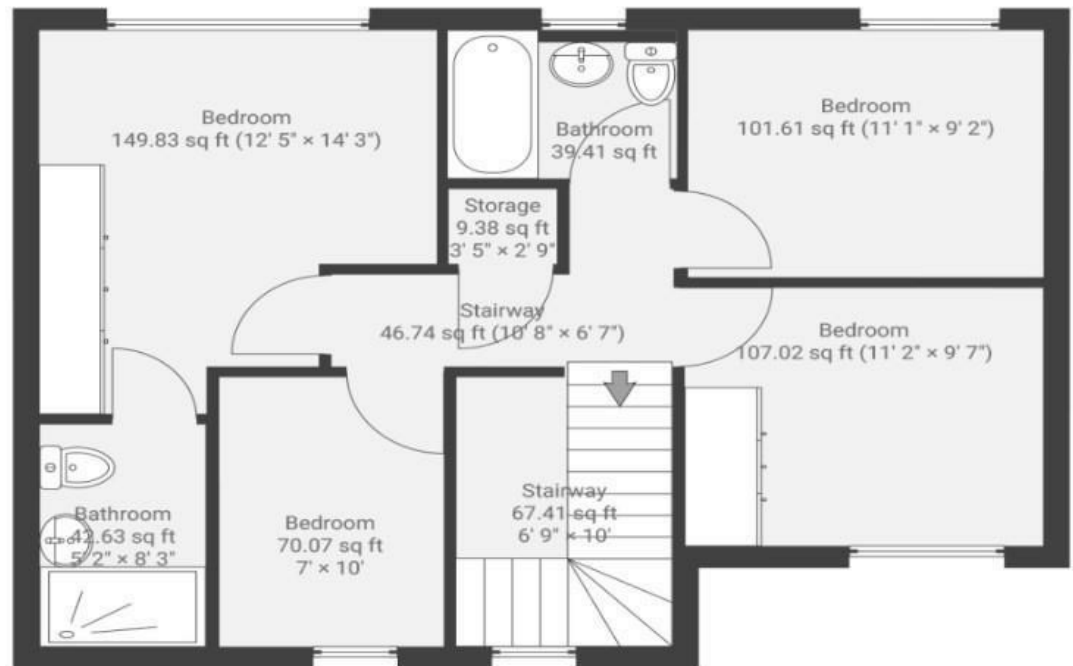
APPROXIMATE FLOOR AREA  
117.0 SQM / 1260 SQFT



GROUND FLOOR



FIRST FLOOR



Illustrations are for reference purposes only, measurements are approximate, not to scale.

**Boardwalk**

# John Martin

STANDISH, STANDISH

£

£635,000

zzz

4 Bedrooms



GL10 3WB



3 Bathrooms

*'From the first time I saw the view — especially at sunset — I knew this was the right place for me. Every evening looks a little different, but it's always beautiful, and the summer nights here are just something else. The south-facing garden and patio have been perfect for having friends over or just enjoying a quiet evening outside. It's a lovely spot to unwind. One of the things I've really loved is the community here — people look out for each other and there are regular events that make it a fantastic place to live'*

