

Boardwalk

Rousham Road

, BRISTOL

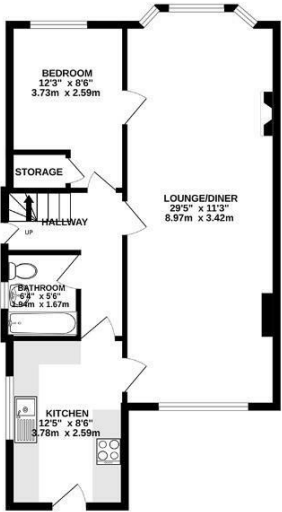
Rousham Road

EASTVILLE

APPROXIMATE FLOOR AREA
83.9 SQM / 903 SQFT



GROUND FLOOR



FIRST FLOOR



Illustrations are for reference purposes only, measurements are approximate, not to scale.

Boardwalk

Rousham Road

, BRISTOL



£350,000



2 Bedrooms



BS5 6XN



2 Bathrooms

"We have had a fabulous time living here and making this street our home. The position of the house means some great views over Bristol and the house always feels full of light. Sitting by the front window is the perfect place for a morning cuppa. The lounge/diner is where we spend lots of our time relaxing and hosting friends and the garden is our favourite place to unwind at the end of the day. We enjoy the short walk down to the pubs and cafes of St Werberghs via Narrowways Nature Reserve, catching one of the best views on Bristol on the way down. Perfectly placed for reaching the bigger green spaces of Purdown and Eastville Park."

