

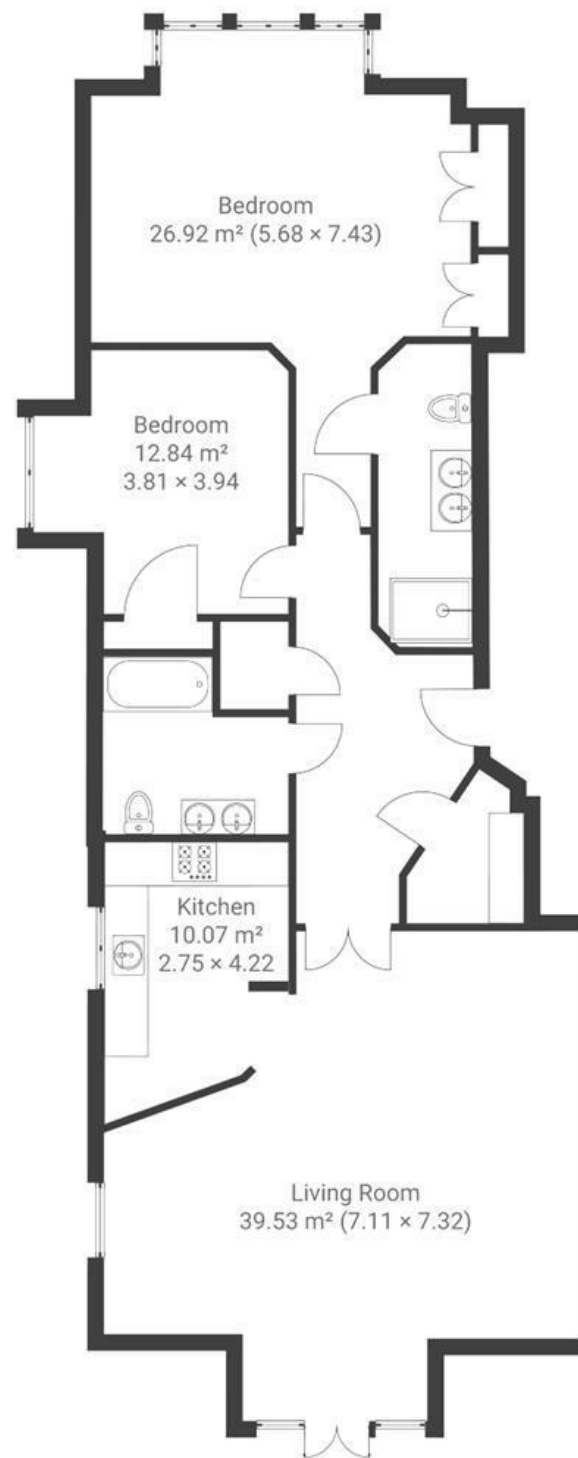
# Chattenden House

## STOKE BISHOP

APPROXIMATE FLOOR AREA  
125 SQM / 1345 SQFT



GROUND FLOOR



Boardwalk

# Stoke Park Road , BRISTOL



£475,000



2 Bedrooms



BS9 1LR



2 Bathrooms

*"Our parents enjoyed many happy memories during their time in Chattenden House. The secure development made it comfortable for them and us knowing they were safe and close to us should they need anything. Even though this was a downsize for them, their home still provided enough space for their many grandchildren to visit at one time. Our favourite memories were getting to sit outside in their garden whilst they sat inside with the doors open during lockdown making what was scary time for them easier to get through."*

