

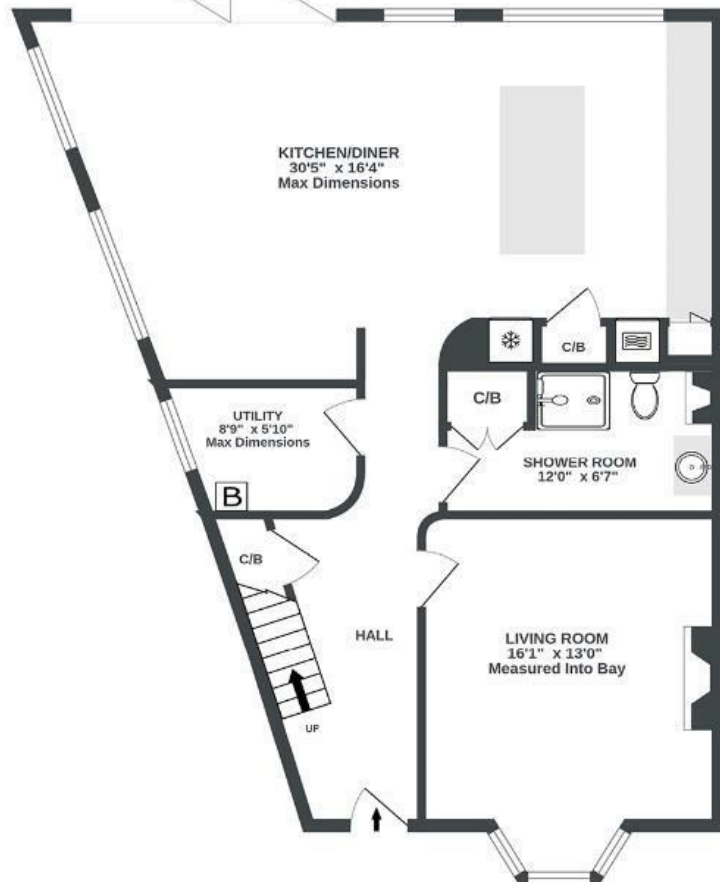
Carlyle Road

EASTON

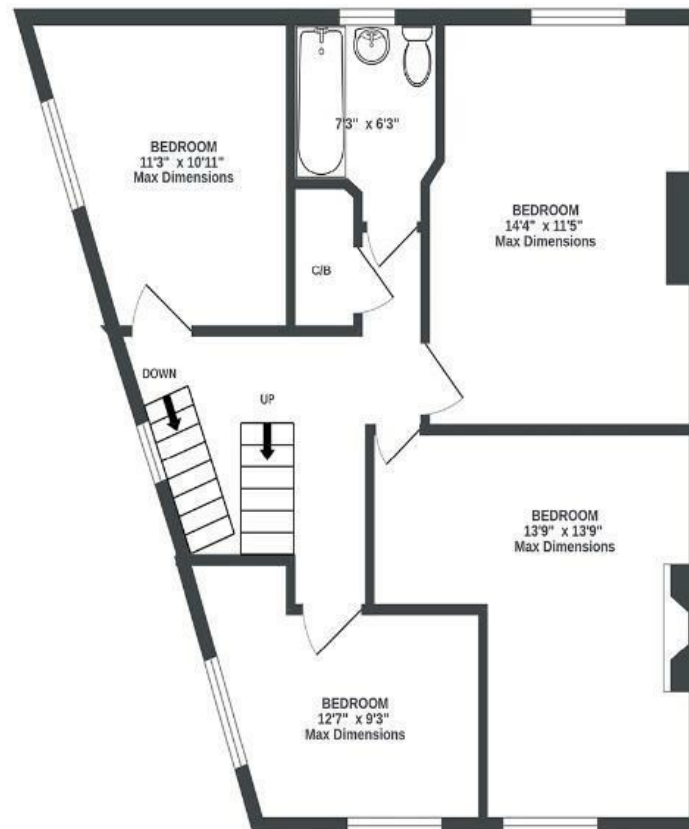
APPROXIMATE FLOOR AREA
165.5 SQM / 1782 SQFT



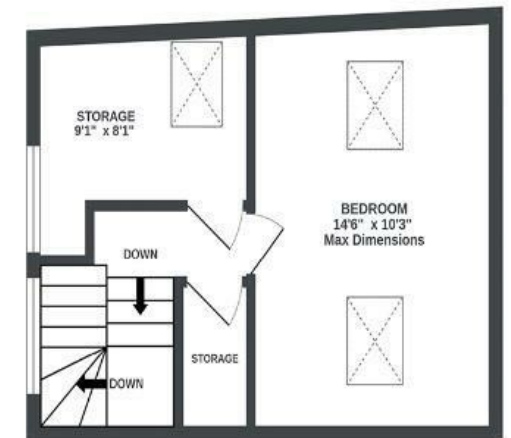
GROUND FLOOR
863 sq.ft. approx.



1ST FLOOR
645 sq.ft. approx.



2ND FLOOR
274 sq.ft. approx.



Illustrations are for reference purposes only, measurements are approximate, not to scale.

Boardwalk

Carlyle Road , BRISTOL

£

£650,000



BS5 6HH

zzz

5 Bedrooms



2 Bathrooms

"We love our home and where it is so much. Our kitchen is the heart of it, from breakfast around the island, summer dinners with the doors open to the garden or parties and kitchen discos, it does it all! The space really works for us with our children having their own rooms, we have a dedicated home office and a spare room for family and friends. We are so close to the most amazing school, spoiled for choice for local places to go out and be in town in 10 mins down the cycle path."

