

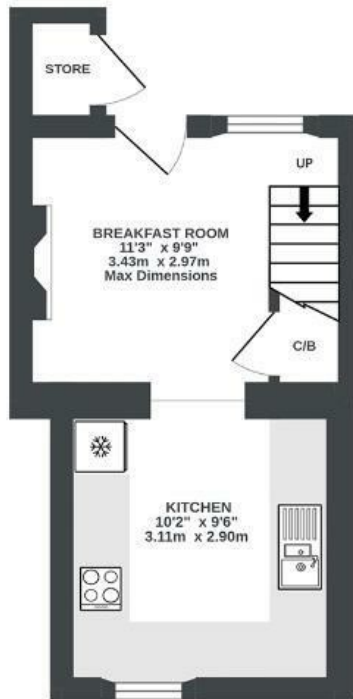
# Bath Road

## WILLSBRIDGE

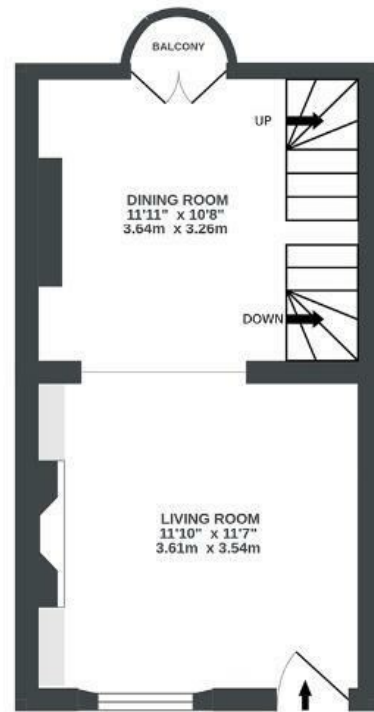
APPROXIMATE FLOOR AREA  
82.8 SQM / 891 SQFT



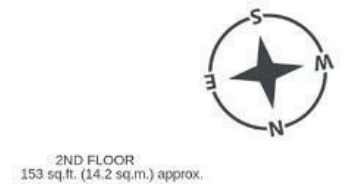
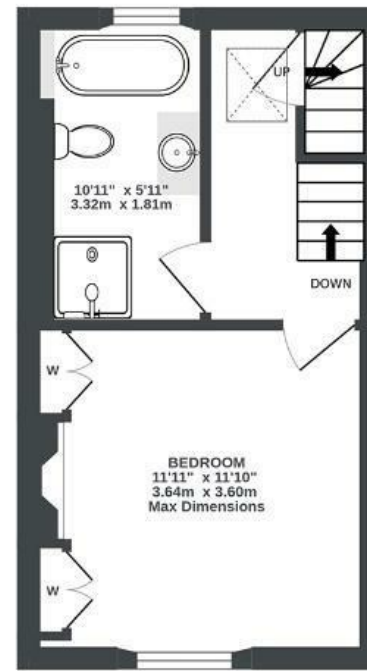
**BASEMENT**  
216 sq.ft. (20.0 sq.m.) approx.



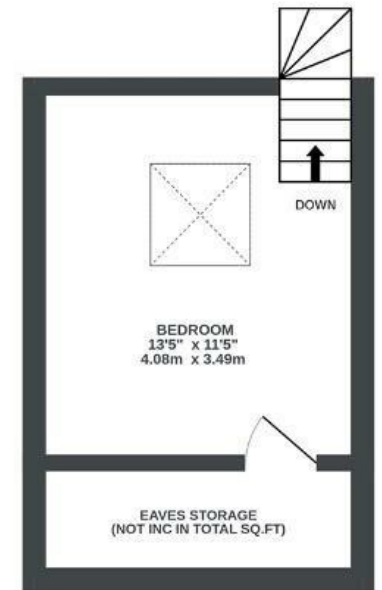
**GROUND FLOOR**  
258 sq.ft. (24.0 sq.m.) approx.



**1ST FLOOR**  
264 sq.ft. (24.5 sq.m.) approx.



**2ND FLOOR**  
153 sq.ft. (14.2 sq.m.) approx.



Illustrations are for reference purposes only, measurements are approximate, not to scale.

**Boardwalk**

# Bath Road

WILLSBRIDGE, BRISTOL



£400,000



2 Bedrooms



BS30 6EF



1 Bathrooms

*"We love that our home is close to a busy high street with lovely cafes and shops whilst also having the countryside on our doorstep with beautiful walks and views of Bath and Bristol. We really enjoy sunny days relaxing in our garden with friends and evenings watching films in our cosy living room. We have made many special memories in our home, our favourites being getting ready for our wedding day and bringing home our daughter."*

