

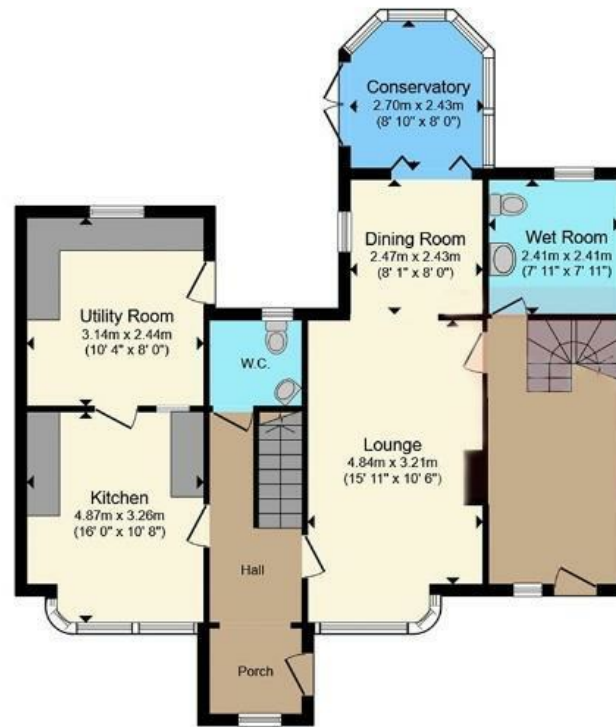
Frenchay Road

FRENCHAY

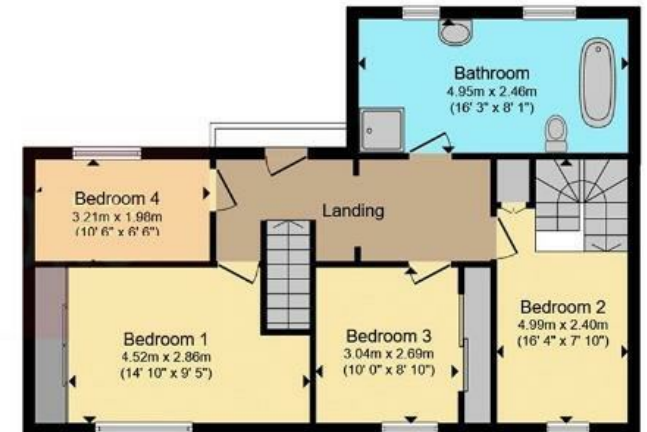
APPROXIMATE FLOOR AREA
150.8 SQM / 1624 SQFT



GROUND FLOOR



FIRST FLOOR



Boardwalk

Frenchay Park

, BRISTOL

£

£650,000



BS16 1HB

zzz

4 Bedrooms



3 Bathrooms

"We've been so lucky to live here for the past 20 years. The community here is great, the house itself is an amazing and versatile family home and the location couldn't have been better for us. We're surrounded by greenbelt in every direction and yet so close to Bristol City centre. With Stoke park estate opposite, Snuff Mills and Oldbury Court estate behind, Begbrook park (with social club, bowling green, tennis courts, swing park and so on) and Frenchay Common to the right – all just a few minutes walk away – and if you fancy a longer walk, you can take a left and stroll along the river Frome to Eastville park. Our home is directly opposite Grow Wilder, a great community food growing hub associated with Avon Wildlife Trust, and we have an allotment just behind that. If we were staying I'd be tempted to convert the loft, as it's huge and will have the most amazing views over Stoke park."

