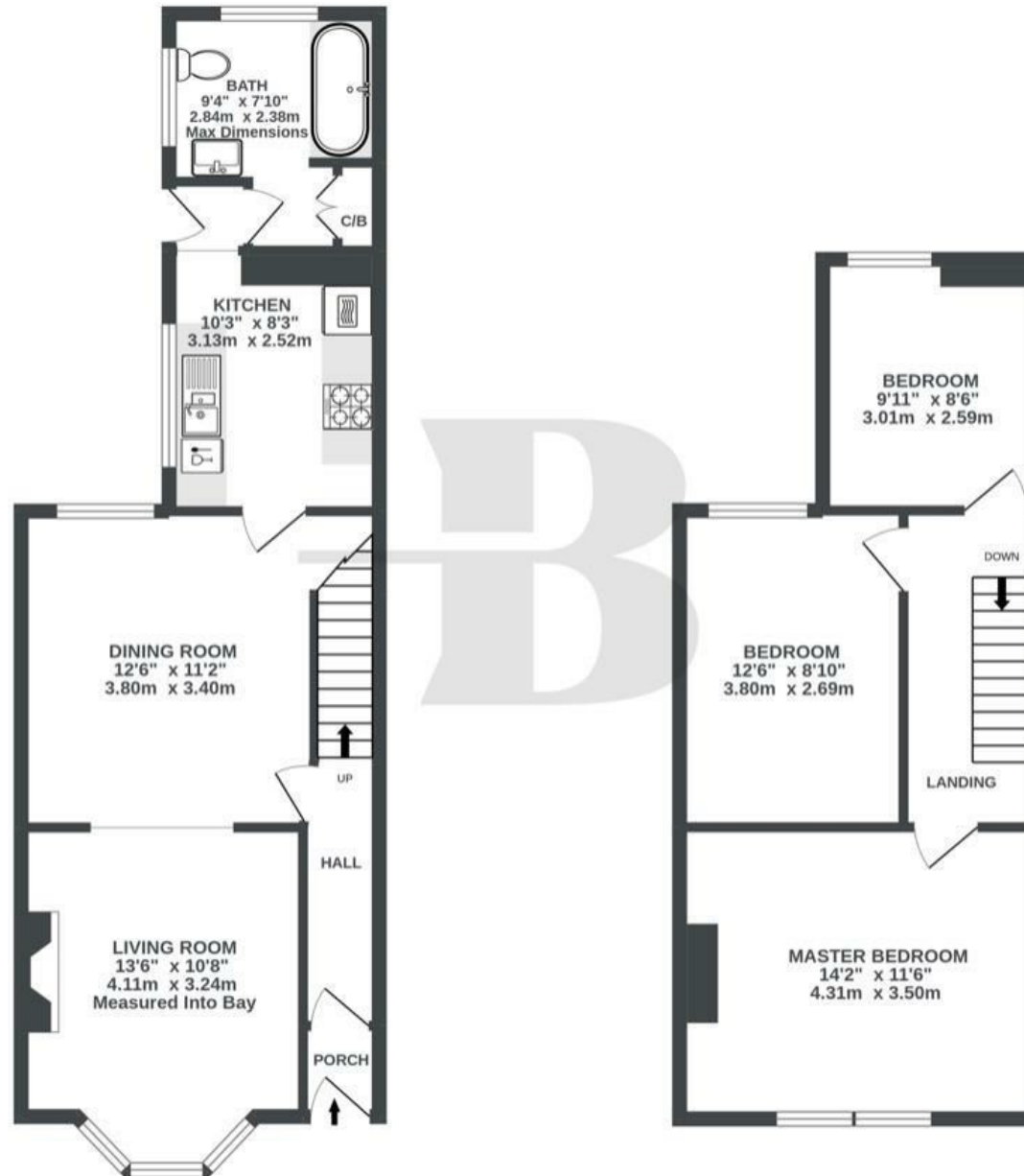


GROUND FLOOR  
497 sq.ft. (46.1 sq.m.) approx.

1ST FLOOR  
415 sq.ft. (38.6 sq.m.) approx.



TOTAL FLOOR AREA : 912 sq.ft. (84.7 sq.m.) approx.

Whilst every attempt has been made to ensure the accuracy of the floorplan contained here, measurements of doors, windows, rooms and any other items are approximate and no responsibility is taken for any error, omission or mis-statement. This plan is for illustrative purposes only and should be used as such by any prospective purchaser. The services, systems and appliances shown have not been tested and no guarantee as to their operability or efficiency can be given.  
Made with Metropix ©2022.



Boardwalk

# Ruby Street

BEDMINSTER, BRISTOL

£

£465,000



BS3 3DY

zzz

3 Bedrooms



1 Bathrooms

*"We've absolutely loved living in this house - it's been a warm, welcoming space that instantly felt like home. Ruby Steet is such a fantastic location. The neighbourhood is so friendly, with great proximity to shops and restaurants. It's a quiet street and yet close to the buzz of North street. A perfect combination. We will dearly miss the property and the fond memories of Bedminster."*

