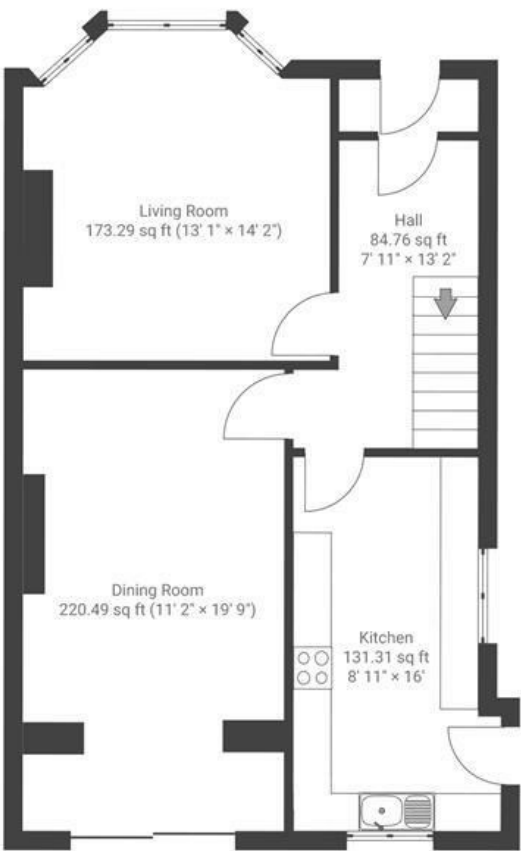


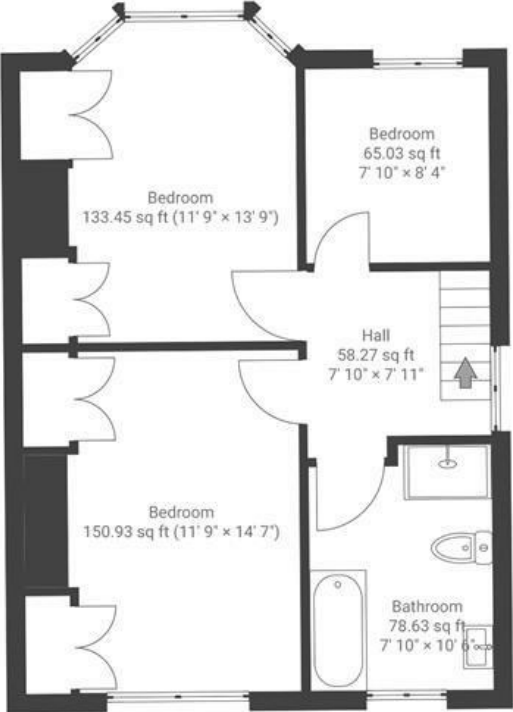
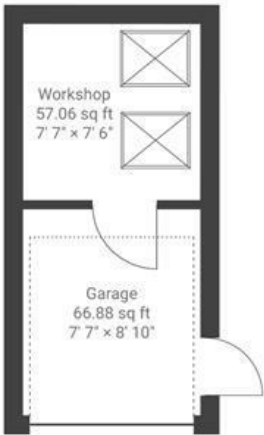
Southmead Road

FILTON

APPROXIMATE FLOOR AREA
116 SQM / 1253 SQFT



GROUND FLOOR



FIRST FLOOR

Boardwalk

Southmead Road

FILTON, BRISTOL



£435,000



3 Bedrooms



BS34 7RF



1 Bathrooms

"We've owned this home since 1993, and it will be very sad to say goodbye. It's been a lovely place to live, with a pleasant outlook over the sports field that we've always enjoyed. The location has been incredibly convenient—there's a great bus route nearby with easy access to Southmead Hospital, the city centre, and Whiteladies Road. Local shops are just a short walk away, making everyday life really easy."

