

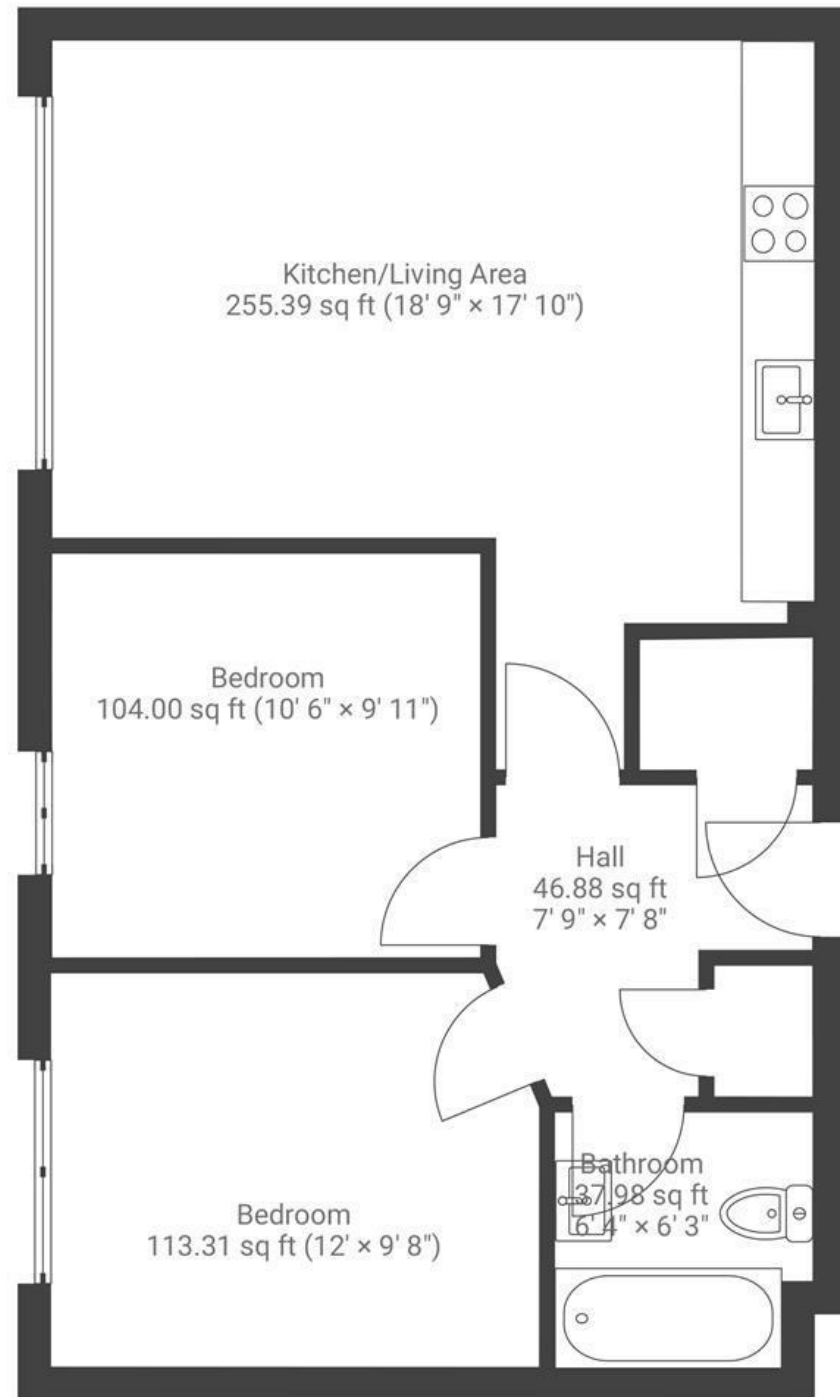
Ratcliffe Court

OLD MARKET

APPROXIMATE FLOOR AREA
53.88 SQM / 580 SQFT



SECOND FLOOR



Boardwalk

Ratcliffe Court

SWEETMAN PLACE, BRISTOL



£285,000



2 Bedrooms



BS2 0FB



1 Bathrooms

"We've loved living here – it's a bright, welcoming space that feels both cosy and airy. The location is fantastic, with easy access to the harbourside, train station, town centre, motorway, and a great mix of local shops and restaurants. Whilst being so central, it's wonderfully peaceful, with plenty of greenery all around."

