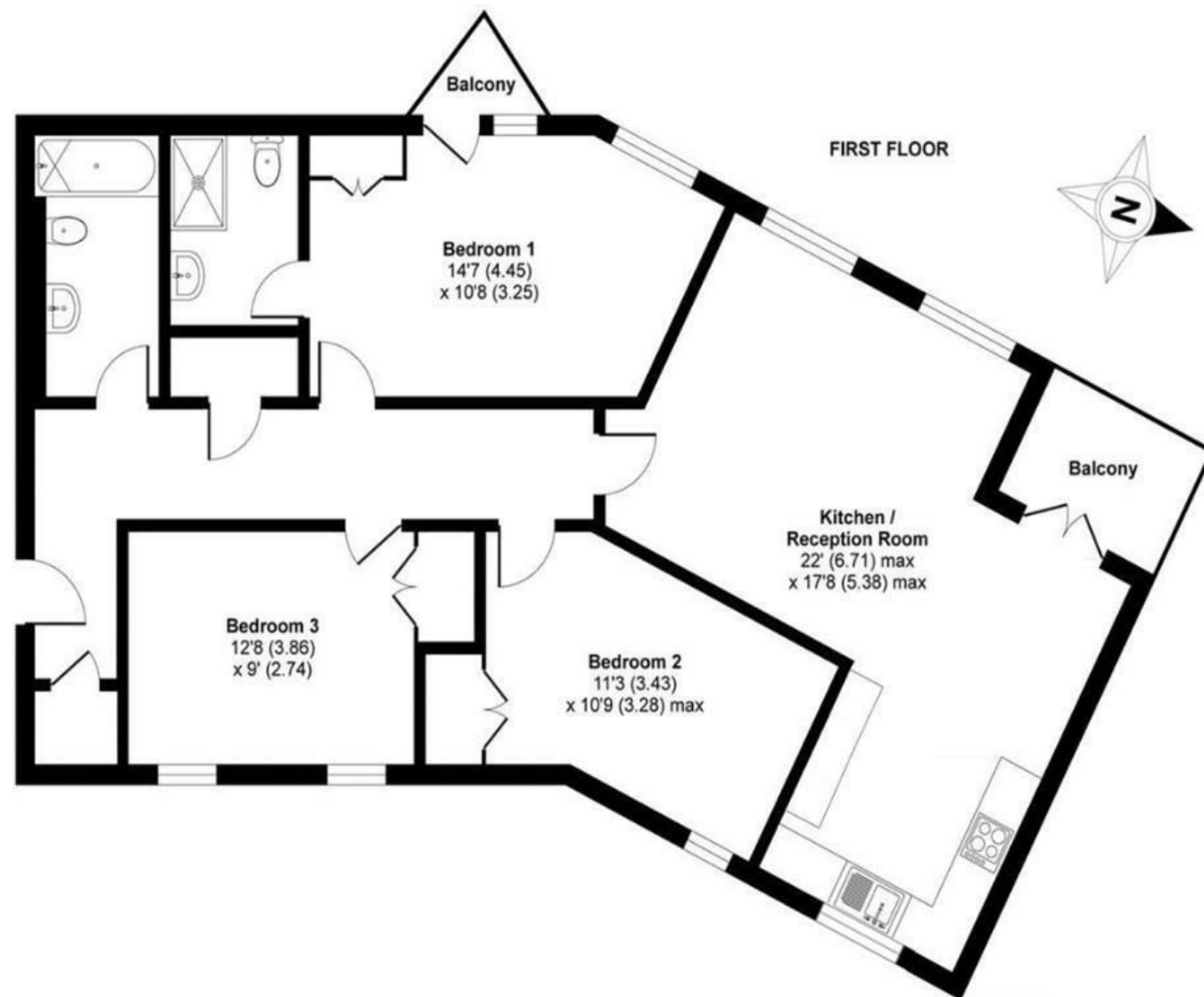


City Space

TEMPLE QUAY

APPROXIMATE FLOOR AREA
106.3 SQM / 1144 SQFT



Illustrations are for reference purposes only, measurements are approximate, not to scale.

Boardwalk

City Space

BARTON VALE, BRISTOL

£

£365,000

zzz

3 Bedrooms



BS2 0LJ



2 Bathrooms

"We're really lucky to live in a quiet, green part of Bristol, just a few minutes from the buzzing Old Market. Our area has amazing local spots like coffee shop, breweries and Forest Bakery, which is the best bakery around. The Dings is a friendly community with great schools and parks, and it's only a 7-minute walk to Temple Meads station. We love watching sunsets from our balcony and being surrounded by greenery. It's been a great place to raise our 6-year-old daughter. We've got a comfy guest room for friends and family, plus a home office. And the Barley Mow pub nearby is perfect for Sunday roasts or after-work drinks."

