

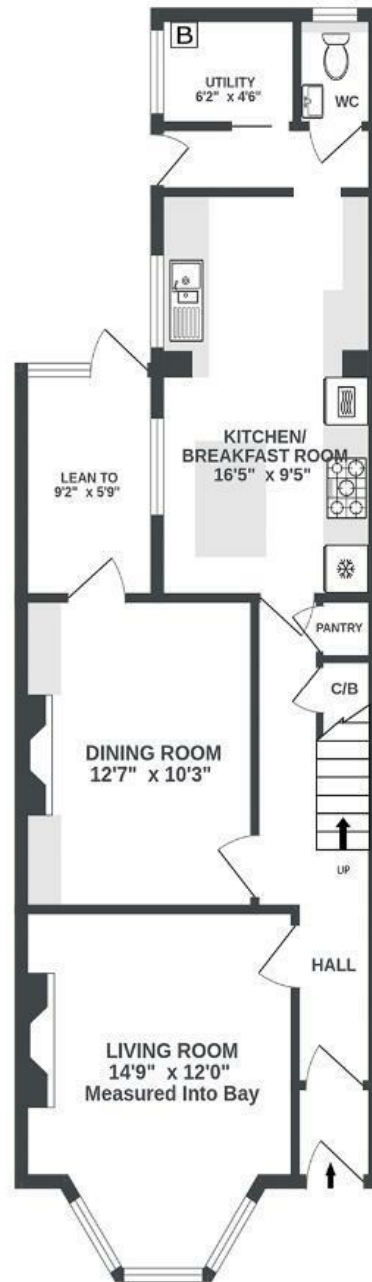
Islington Road

SOUTHVILLE

APPROXIMATE FLOOR AREA
124.9 SQM / 1344 SQFT



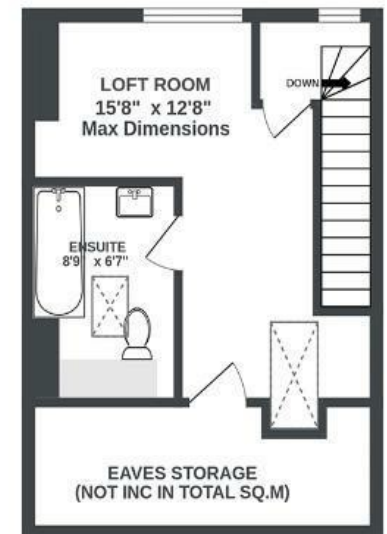
GROUND FLOOR
655 sq.ft. approx.



1ST FLOOR
455 sq.ft. approx.



2ND FLOOR
234 sq.ft. approx.



Illustrations are for reference purposes only, measurements are approximate, not to scale.

Boardwalk

Islington Road

SOUTHVILLE, BRISTOL

£

£600,000

zzz

4 Bedrooms



BS3 1PZ



2 Bathrooms

"Our daughter was born only a few days after we moved in to Islington Road so this home has been a special place where we became a family. We took an unloved HMO and have made it a family home. The kitchen of the heart of our home - whether it's cooking for friends or having a kitchen disco it has been a place of much love and laughter. We are fortunate that the street is full of families and our next door neighbour bakes the best sourdough bread which he often shares with us!"

