

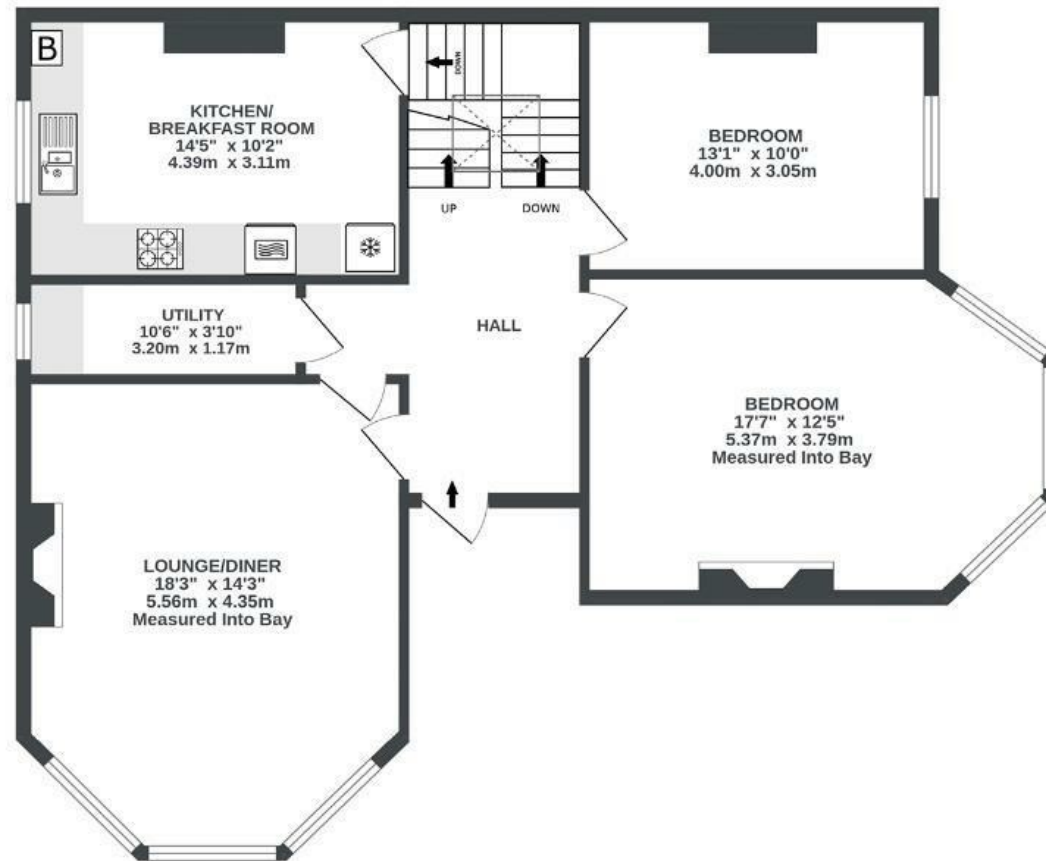
Ravenswood Road

REDLAND

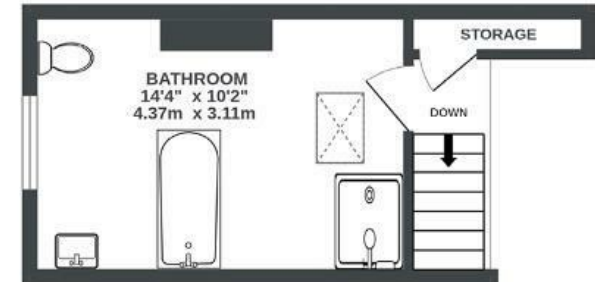
APPROXIMATE FLOOR AREA
101.9 SQM / 1097 SQFT



FIRST FLOOR
901 sq.ft. (83.7 sq.m.) approx.



UPPER FIRST FLOOR
196 sq.ft. (18.2 sq.m.) approx.



Illustrations are for reference purposes only, measurements are approximate, not to scale.

Boardwalk

Ravenswood

REDLAND, BRISTOL



£475,000



2 Bedrooms



BS6 6BP



1 Bathrooms

"My home is so lovely, every room has so much space and character. Every room has natural light, especially the south facing lounge which gets sunshine all day. It's on a quiet, beautiful, tree-lined street with close access to the main areas of Bristol. The nearest high street is Cotham Hill with lots of coffee and food spots. I will be sad to let the flat go, but it's time for me to move on."

