

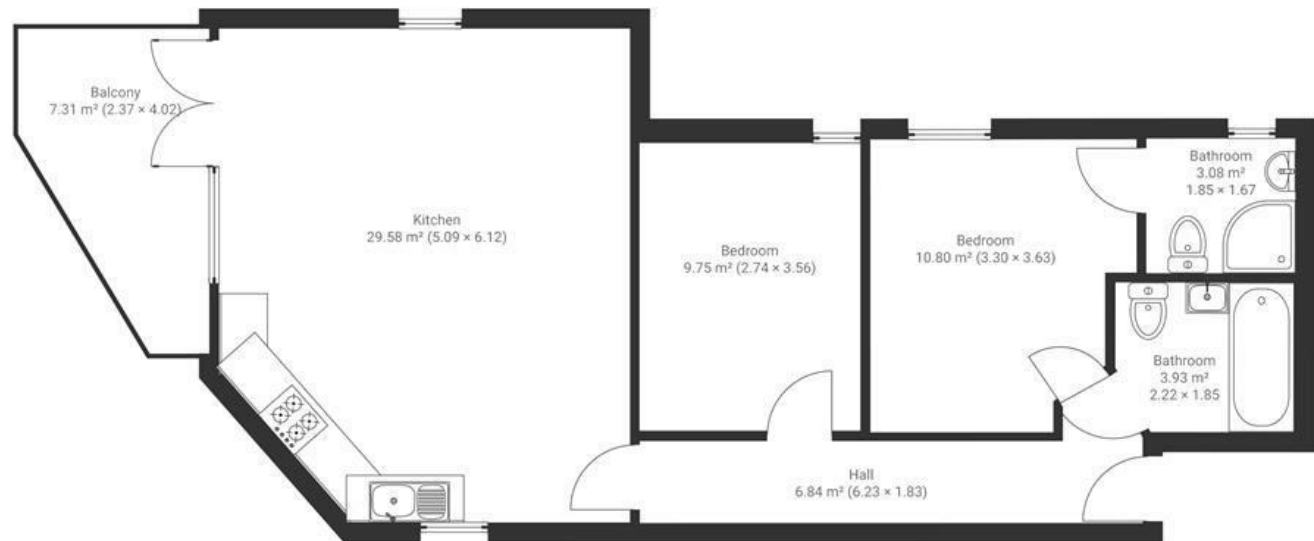
Morley Road

SOUTHVILLE

APPROXIMATE FLOOR AREA
71.2 SQM / 766 SQFT



Ground Floor



Boardwalk

Morley Road

SOUTHVILLE, BRISTOL



£360,000



2 Bedrooms



BS3 1DL



2 Bathrooms

"I love how light and airy the living area is. You can't beat the morning coffees on the balcony all year round looking out over the park. I had a longer commute so I loved that I could park my car up at the weekend and everywhere is walkable. You can do a perfect 5km running loop around the harbourside. A short walk to North Street the best restaurants (Cor!), bars/pubs and coffee shops (Albatross)."

