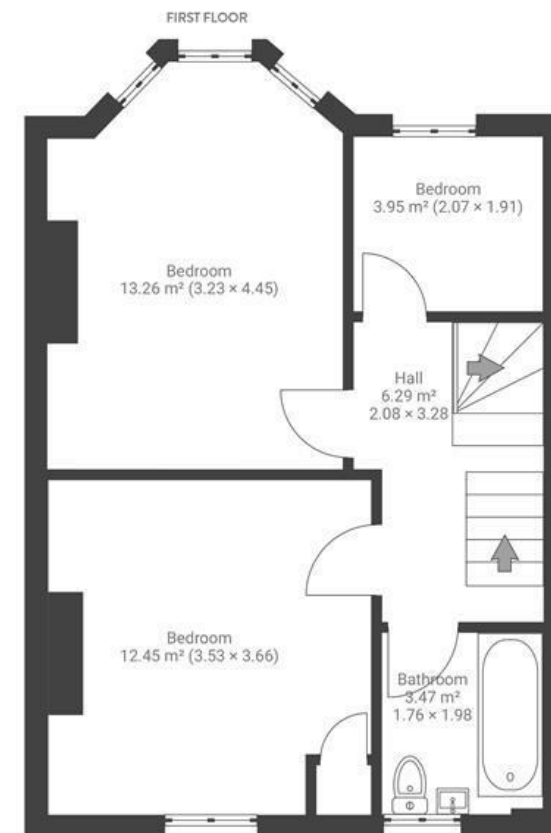
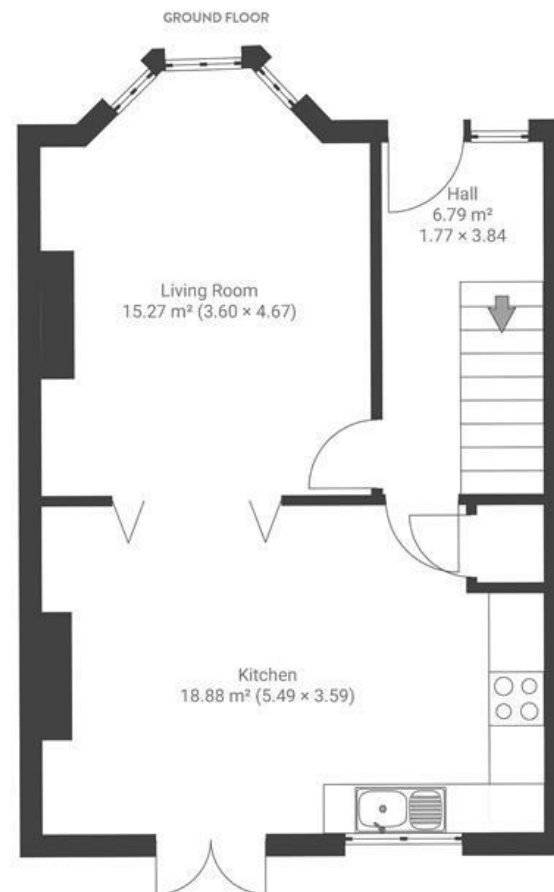


Bloomfield Road

BRISLINGTON

APPROXIMATE FLOOR AREA
115 SQM / 1237 SQFT



Boardwalk

Bloomfield Road

BRISLINGTON, BRISTOL



£500,000



BS4 3QP



4 Bedrooms



2 Bathrooms

"Bloomfield Road has been our first home where we have lived very happily for 5.5 years, seeing through a number of life's milestones. There is a vibrant community and we've made a number of life long friends through our neighbours. We spend most weekend mornings on Sandy Park either at the Deli, Greengrocers or Kin, grabbing a coffee, before we head to Arnos Vale Park or Nightingale Valley. We are only moving to North Bristol due to work commutes and it has been a very difficult decision, made harder by the people who live around us and the house we have made a home."

