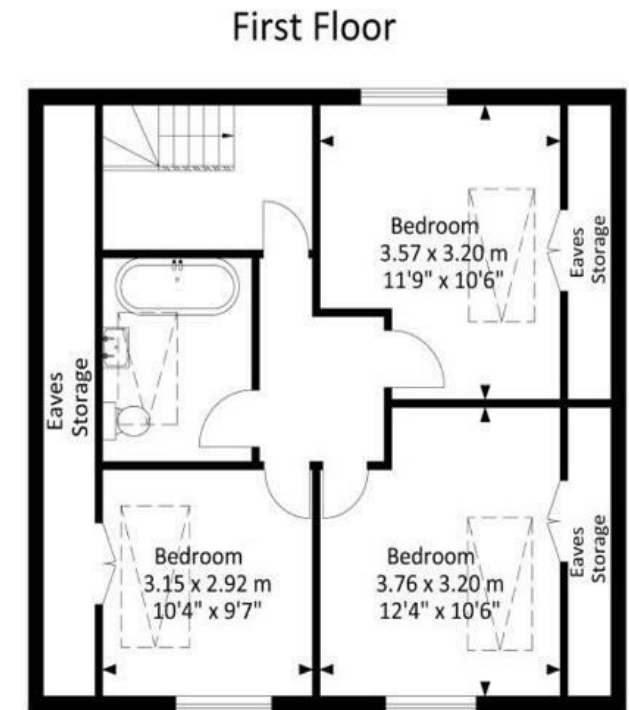
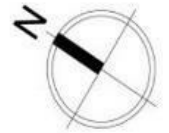
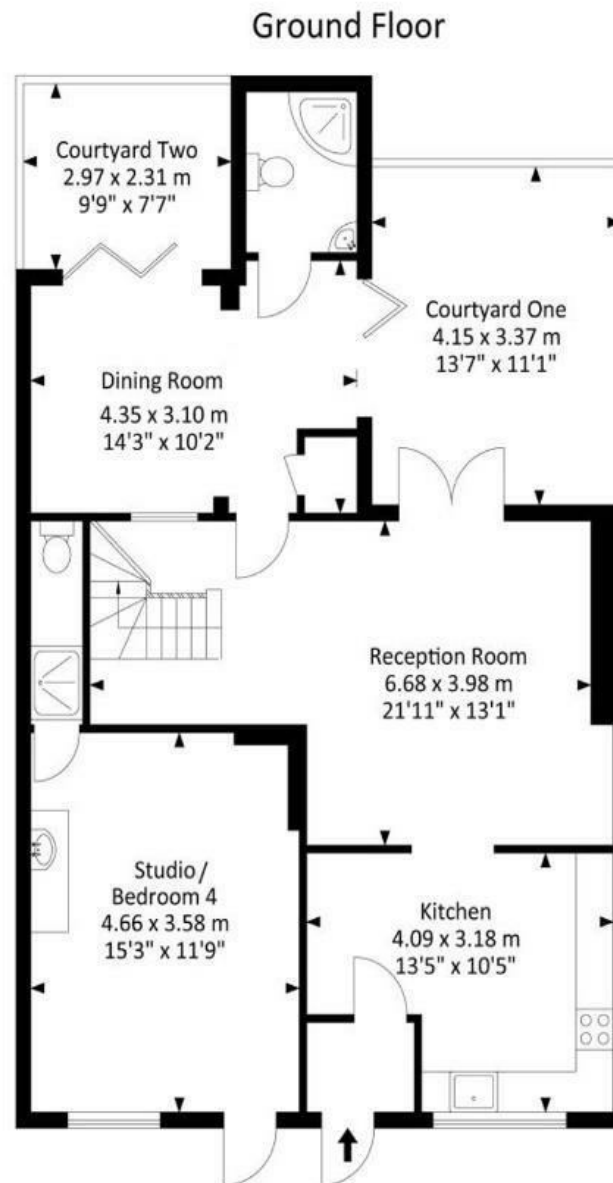


Sydenham Lane

COTHAM

APPROXIMATE FLOOR AREA
128.9 SQM / 1387.2 SQFT



Illustrations are for reference purposes only, measurements are approximate, not to scale.

Boardwalk

Sydenham Lane

, BRISTOL



£575,000



4 Bedrooms



BS6 5SQ



2 Bathrooms

"Opening the bedroom window and feeling like we're in the countryside with the greenery and birds singing is so nice. We love having Bristol's best pubs and restaurants on our doorstep; being able to pop out for a drink at the Hare on the Hill or a quick bite Bianchi's are some of our favourite things to do at the weekend."

