

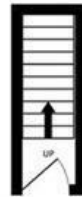
Fishponds Road

FISHPONDS

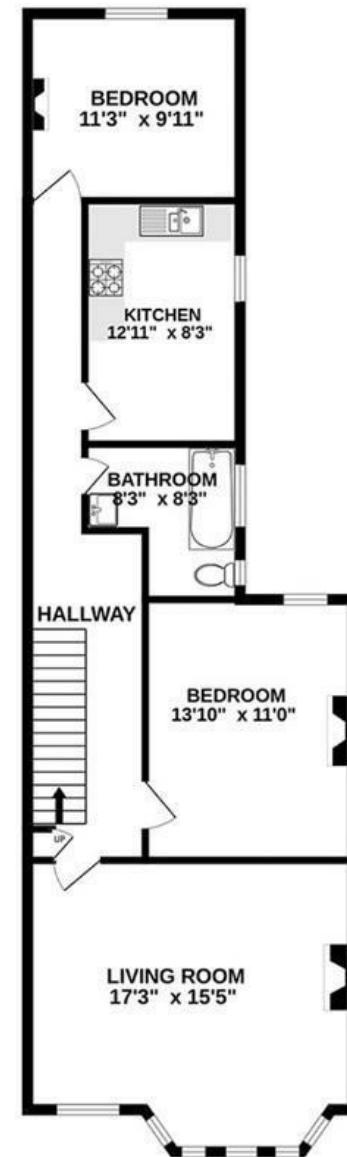
APPROXIMATE FLOOR AREA
79 SQM / 855 SQFT



GROUND FLOOR



FIRST FLOOR



Illustrations are for reference purposes only, measurements are approximate, not to scale.

Boardwalk

Fishponds Road

FISHPONDS, BRISTOL



£250,000



2 Bedrooms



BS16 3XB



1 Bathrooms

"I've turned this flat into a home over the past few years. All the rooms get gorgeous light throughout the day, and it's a fantastic space to host friends and family, or just have a cosy evening in. Having Oldbury Court and Snuff Mills on your doorstep is brilliant for walks and runs, and being close to the Bristol-Bath bike path is amazing for getting into the city or exploring further afield. FED and the Crafty Egg are just down the road and you have everything you need on your doorstep."

