

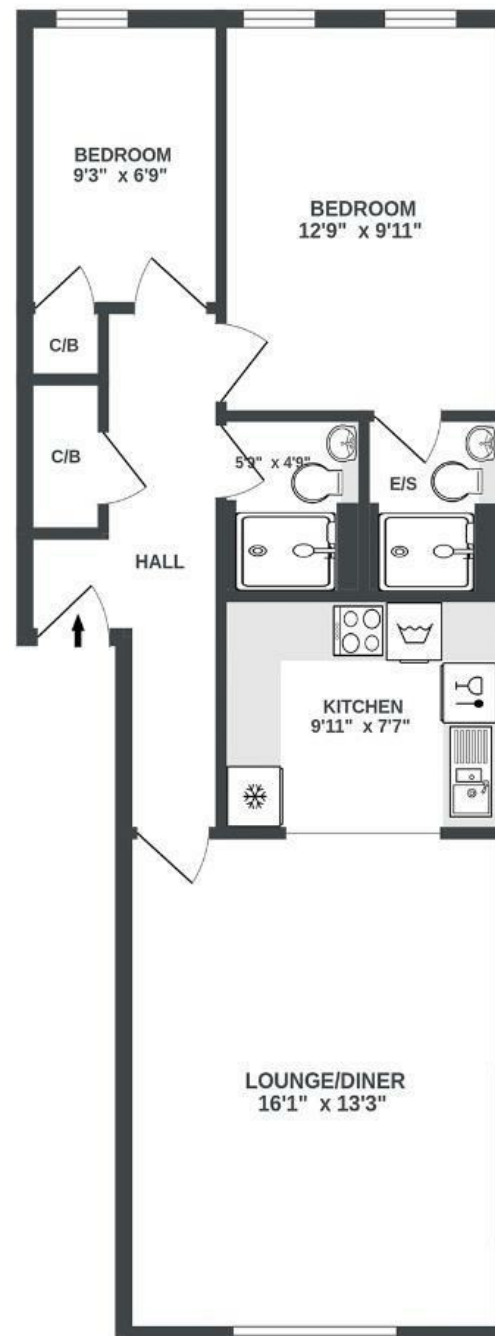
# Guild Court

## REDCLIFFE

APPROXIMATE FLOOR AREA  
57.7 SQM / 621 SQFT



SECOND FLOOR  
621 sq.ft. approx.



Illustrations are for reference purposes only, measurements are approximate, not to scale.

**Boardwalk**

# Redcliff Backs

, BRISTOL

£

£300,000



BS1 6HX

zzz

2 Bedrooms



2 Bathrooms

*"I love that's it surrounded by great places to eat and drink, but it's on a nice, quiet street. It also has southern facing views that look out at St Mary Redcliff Church."*

