

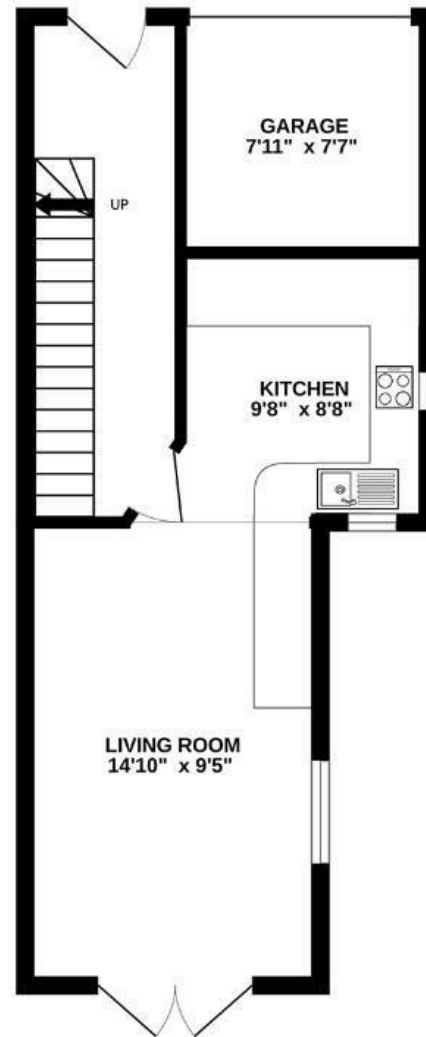
Coach House Lane

ST GEORGE

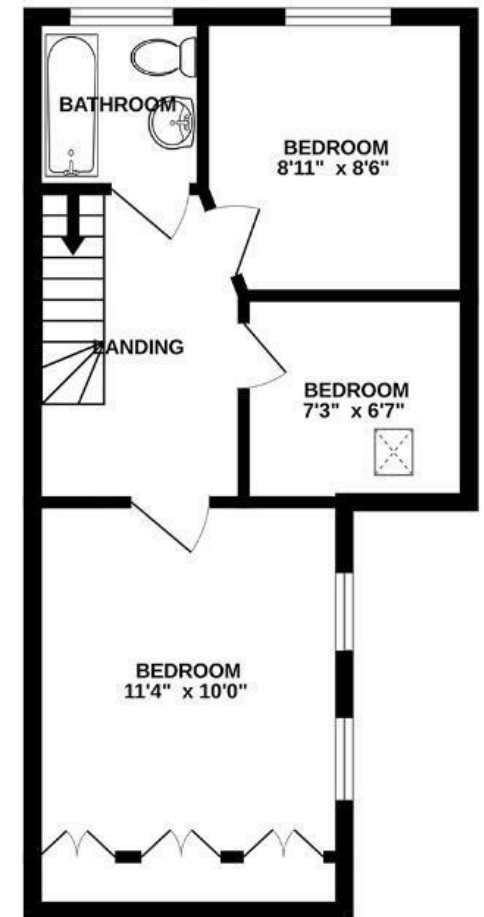
APPROXIMATE FLOOR AREA
65 SQM / SQFT 696



GROUND FLOOR



FIRST FLOOR



~~Boardwalk~~

Coach House

ST. GEORGE, BRISTOL



£360,000



BS5 8FD



3 Bedrooms



1 Bathrooms

"I have loved living in Coach House Lane over the past six years and will be sad to say goodbye. I'll really miss looking across the city skyline in the evening and seeing the hot air balloons passing directly over the house. The location is fantastic, both tucked away and private, yet just a stone's throw from beautiful St George's Park, easily the nicest park in the city. The local area has loads to offer, and more shops, bars & restaurants keep popping up. Personal favourites include the Orchard café round the corner and the Red Church and Lock Up just down the road. When I've ventured further afield then it's been great having a one-minute walk to catch the bus and head into town. I hope the next owners enjoy living here as much as I have."

