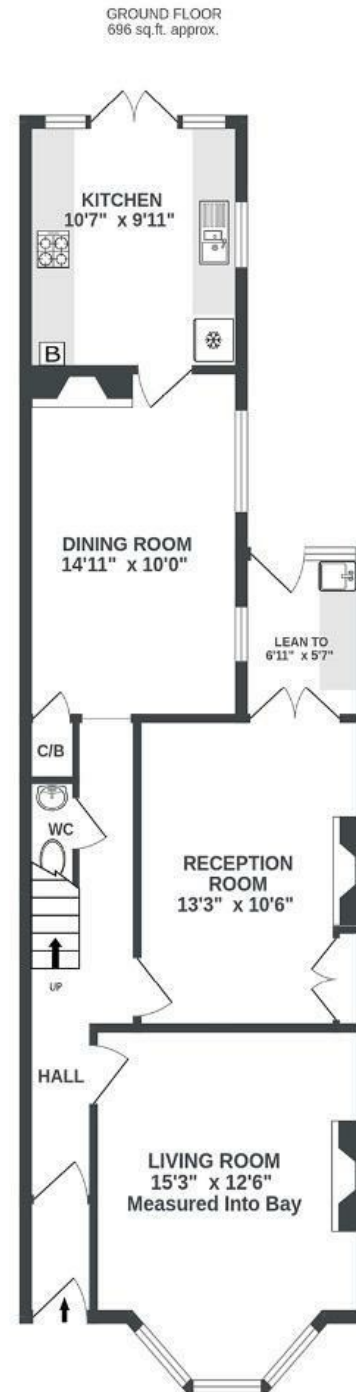


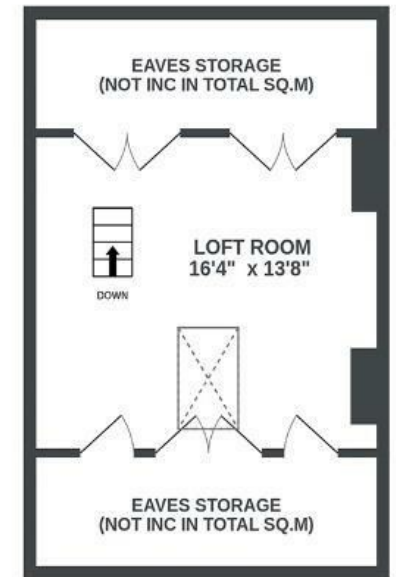
# Somerset Road

## KNOWLE

APPROXIMATE FLOOR AREA  
137.2 SQM / 1476 SQFT



2ND FLOOR  
216 sq.ft. approx.



Illustrations are for reference purposes only, measurements are approximate, not to scale.

Boardwalk

# Somerset Road , BRISTOL



£525,000



3 Bedrooms



BS4 2HU



1 Bathrooms

*"My late wife and I moved here in 1990, raising our son in this special house. It's been filled with laughter, especially in the kitchen that looks out over our long sunny garden. We're only the third family to have lived here in 125 years! The family before us had it for nearly ninety years - it's time for someone else to cherish it."*

