

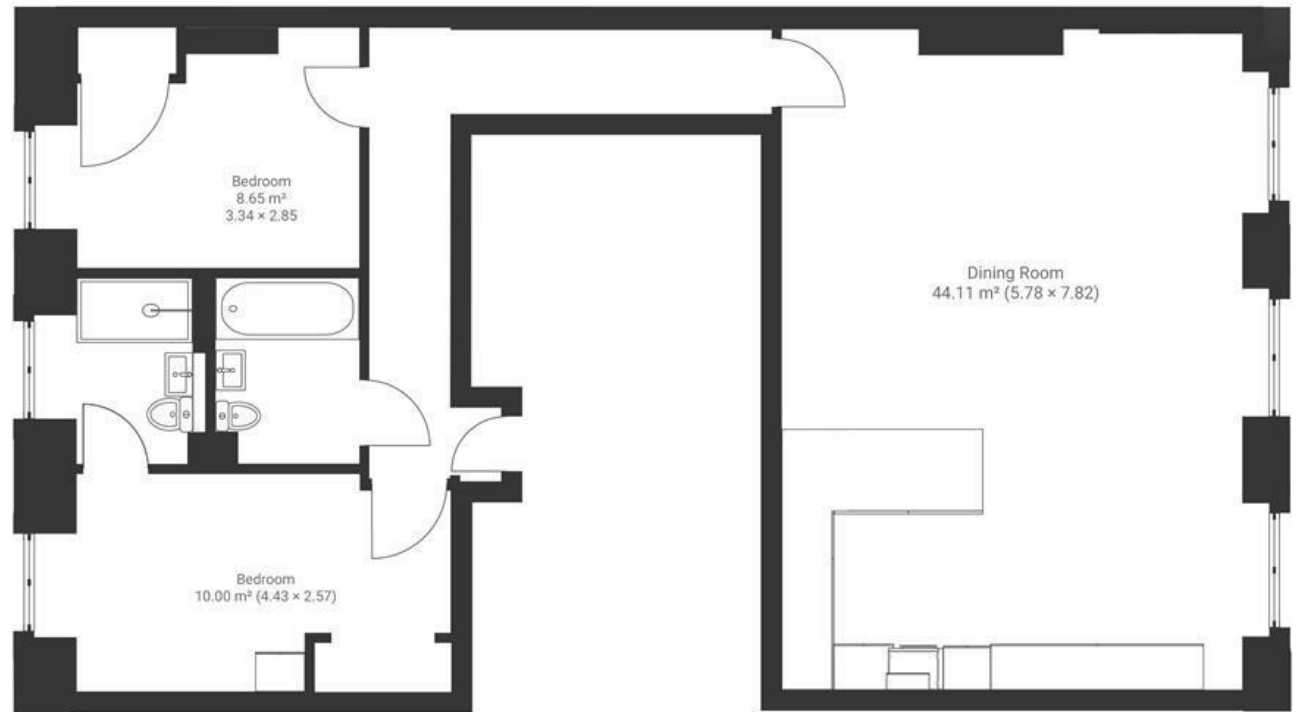
# Portland Mansions

## ST PAUL'S

APPROXIMATE FLOOR AREA  
86 SQM / 925 SQFT



FIRST FLOOR



**Boardwalk**

# Portland Square

ST PAULS, BRISTOL

£

£415,000



BS2 8SR

zzz

2 Bedrooms



2 Bathrooms

*"There is so much we will miss about this flat, especially the high ceilings and huge windows that overlook the square, providing an ever-changing backdrop of greenery that really comes alive in autumn. The open-plan layout is perfect for hosting friends, and the sliding ladder is always a talking point (it's even been featured in a few magazines)! The location is unbeatable, with most of Bristol within walking distance, and it's right at the centre of St. Paul's Carnival. Plus, with the Artist Residence just across the square, delicious pastries from Farro, and the New Bristol Brewery right around the corner, you have the best of the neighbourhood right on your doorstep."*

