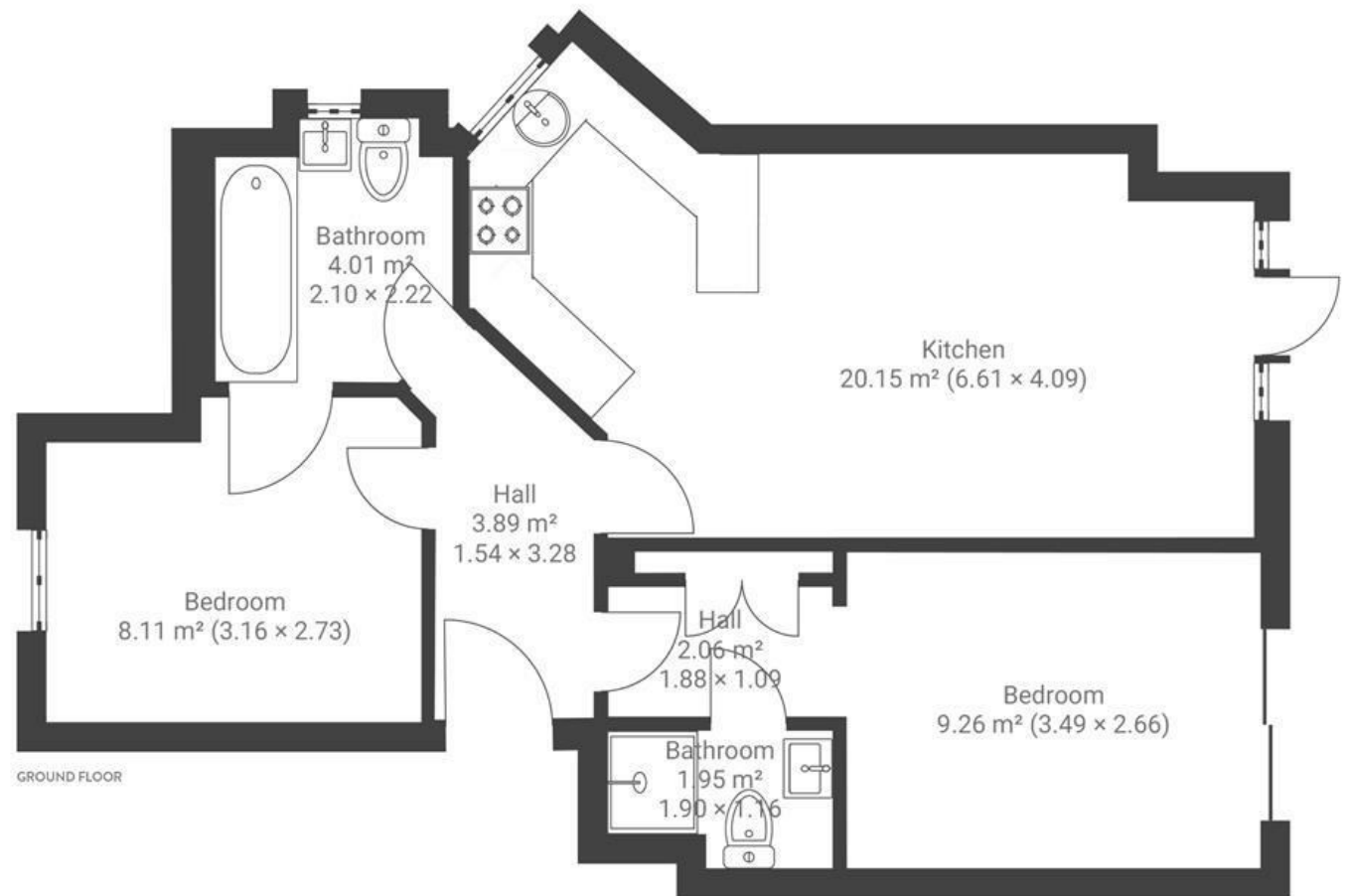


# Newland Heights

ST ANDREWS

APPROXIMATE FLOOR AREA  
52.4 SQM / 564 SQFT



**Boardwalk**

# Balmoral Road

, BRISTOL



£350,000



2 Bedrooms



BS7 9AR



1 Bathrooms

*'I fell in love with this flat the moment I walked into the living room and saw sunshine streaming in through the large french doors. I have woken up to some gorgeous sunrises here and often spotting a hot air balloon floating across the Bristolian sky. I have loved soaking up sun, reading on the open terrace and growing herbs and flowers in my planter. I will miss living in this beautiful peaceful flat and having friends over for dinner parties.'*

