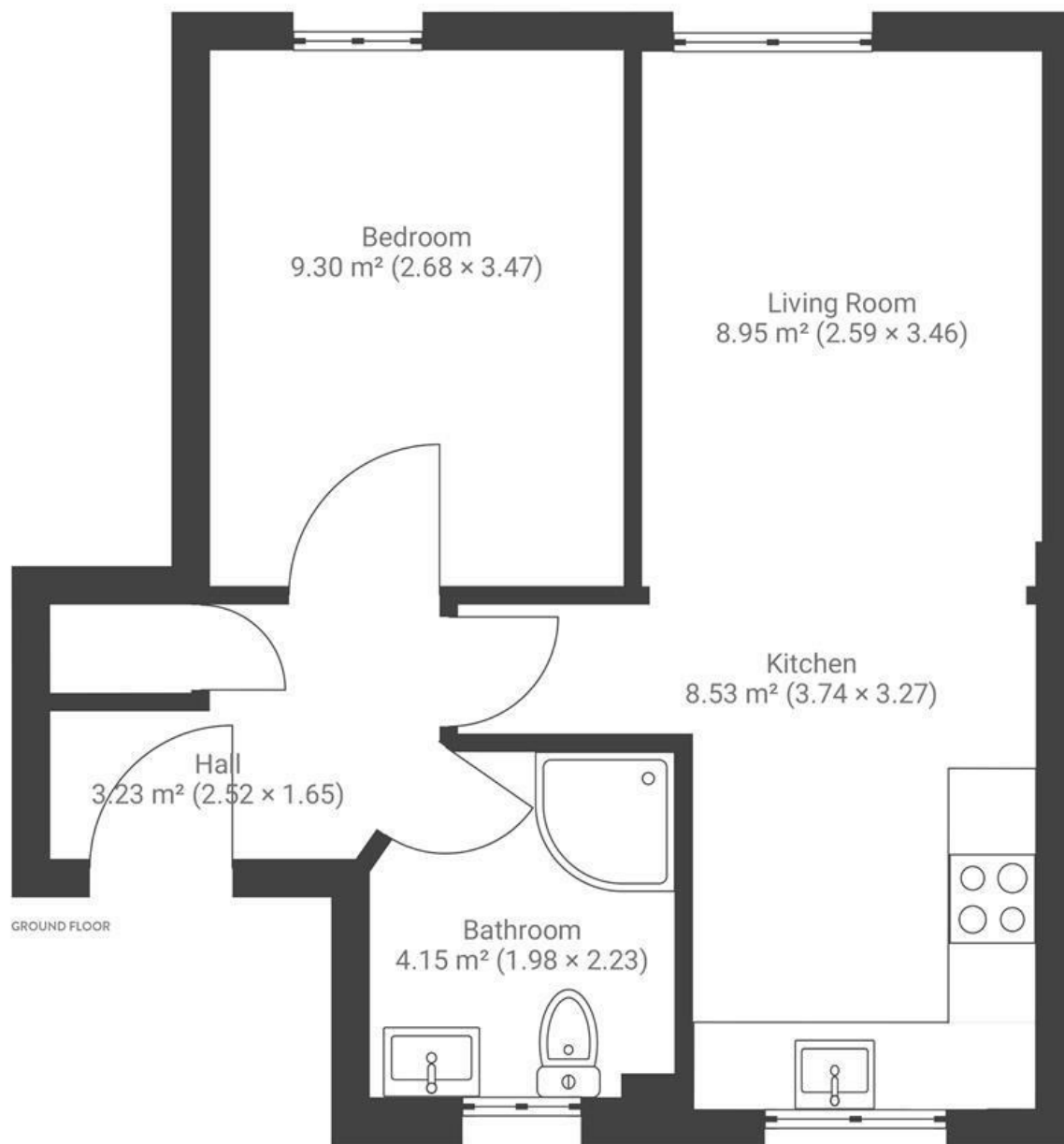


Brownstones

ST GEORGE

APPROXIMATE FLOOR AREA
35 SQM / 376 SQFT



Boardwalk

Whiteway Road

ST GEORGE, BRISTOL



£195,000



1 Bedrooms



BS5 7FH



1 Bathrooms

"The flat feels like a calming retreat away from the hustle and bustle whilst being well located for access to Church Road as well as St Georges Park whilst being in a nice residential area with loads of families. Our personal favourite is the Orchards cafe on Clouds Hill Road, which is a great place to go and work whilst enjoying some great pastries."

